

**An update of Indonesia's NTA:  
Preliminary Results**

# NTA Indonesia

- Lead by Dr Maliki (National Development Planning Agency)
- Member
  - National Development Planning Agency
  - National Statistics Office
  - Demographic Institute of the University of Indonesia
- Supported by UNFPA Indonesia
- Trainings in June-July 2015

# Indonesia: A brief socioeconomic background

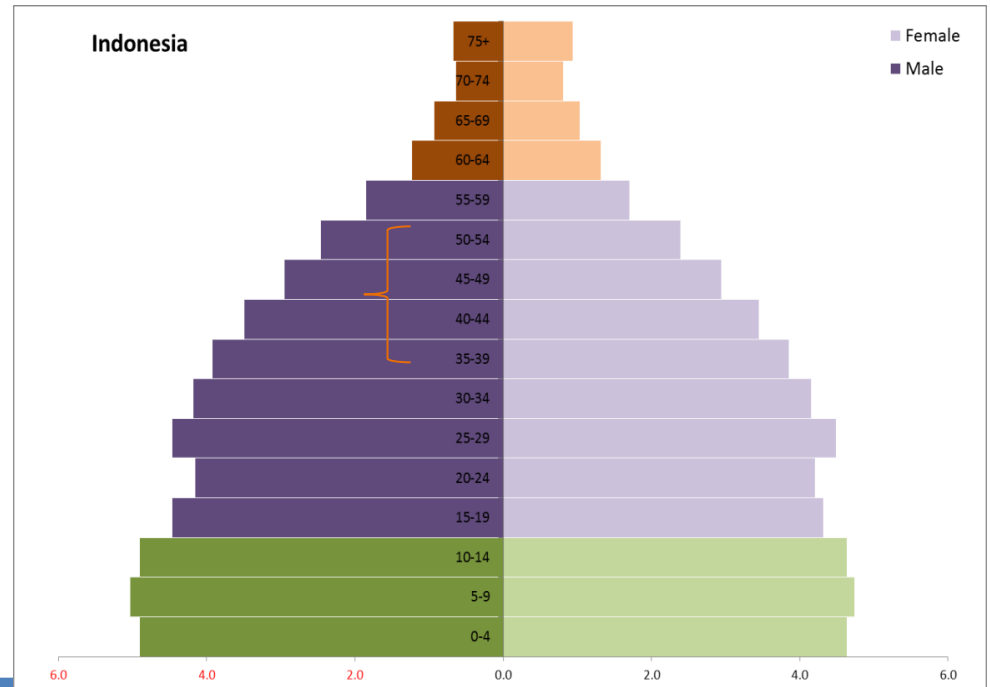
1. Total population about 237.6 million (2010 Census)
2. GDP growth is high of about 6-6.5% annually
3. Unemployment rate on August 2014 about 5.94 %
4. Aging Population (aged 60 years and over) about 18 million (7.6%), and more than half of them still working
5. About 60 % of workers are engaged in informal works and mostly are not covered by social protection programs
6. Most of unpaid family workers are women about 13 million (73 %)
7. Poverty rate declines, but in 2013 still 11.3% (about 28 million ) of population living below the poverty line

# Demographic Issues

## Post-2015 Five Demographic Issues in Indonesia:

- continuing large number of population with a bulk of productive age people
- emerging ageing population
- urbanization
- complex population mobility and internal migration
- High number of maternal deaths

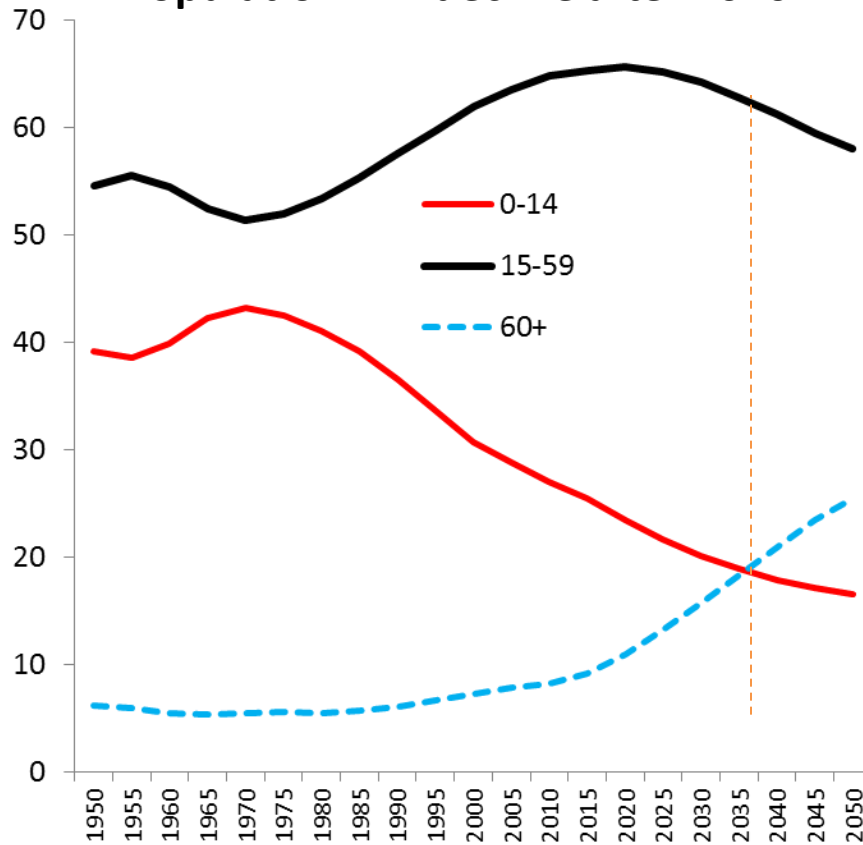
## Indonesia in 2010



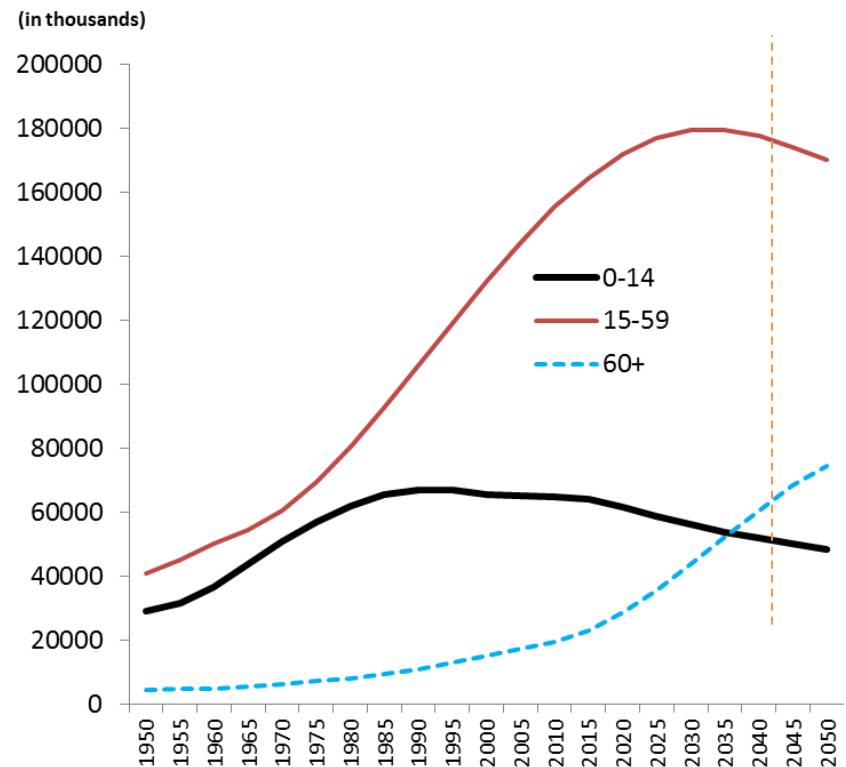
**Today Indonesia's population is in its favorable pace for economic development**

# Demographic Window of Opportunity (DWO): results of fast and then slow decline in fertility rates

The **Percentage** of Working-age Population will decline after 2020



The **Number** of Working Age Population will decline after 2030



## EMERGING AGEING POPULATION

After 2015, the number and percentage of population aged 60 and above will accelerate

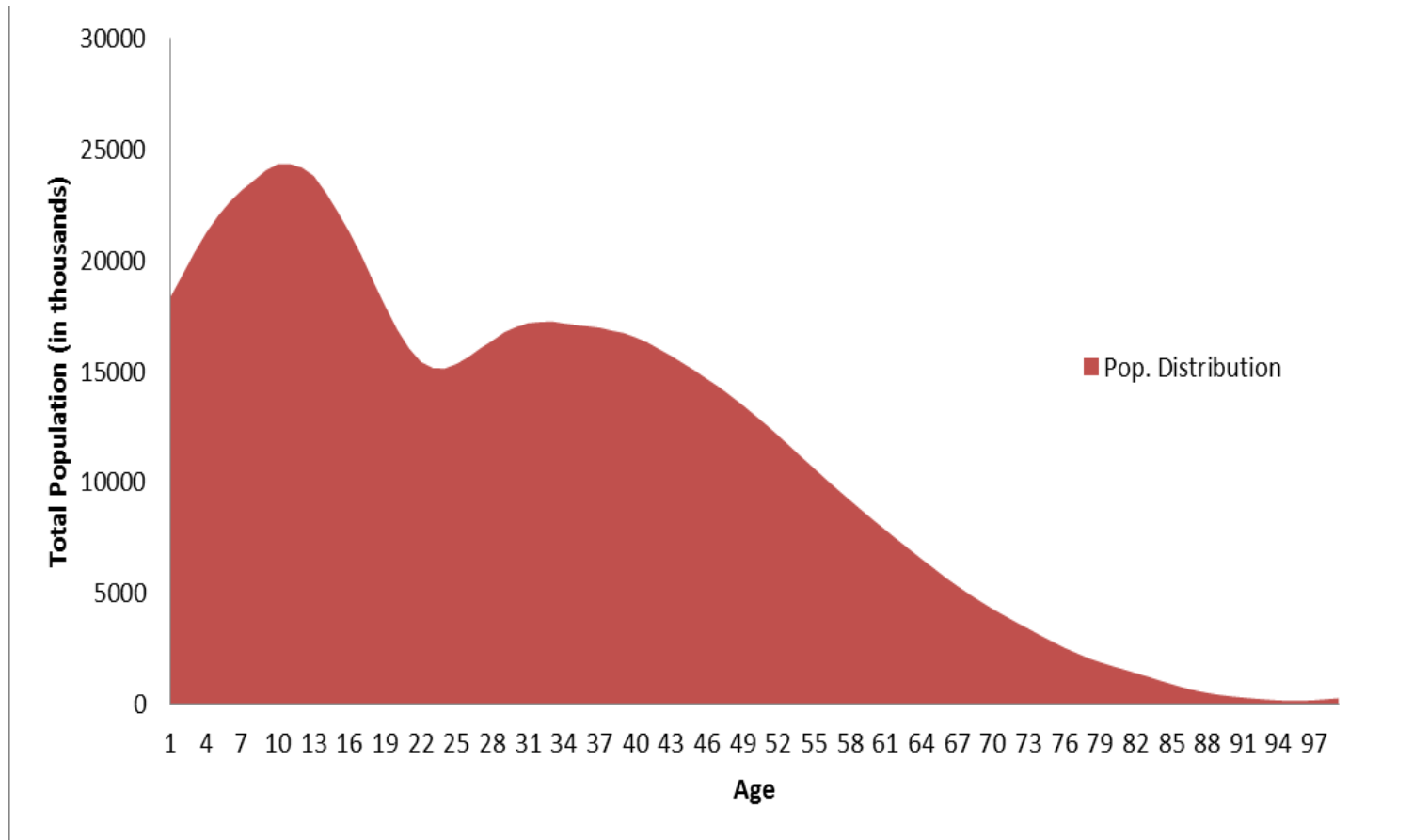
# **NTA PRELIMINARY CALCULATIONS**

# Data

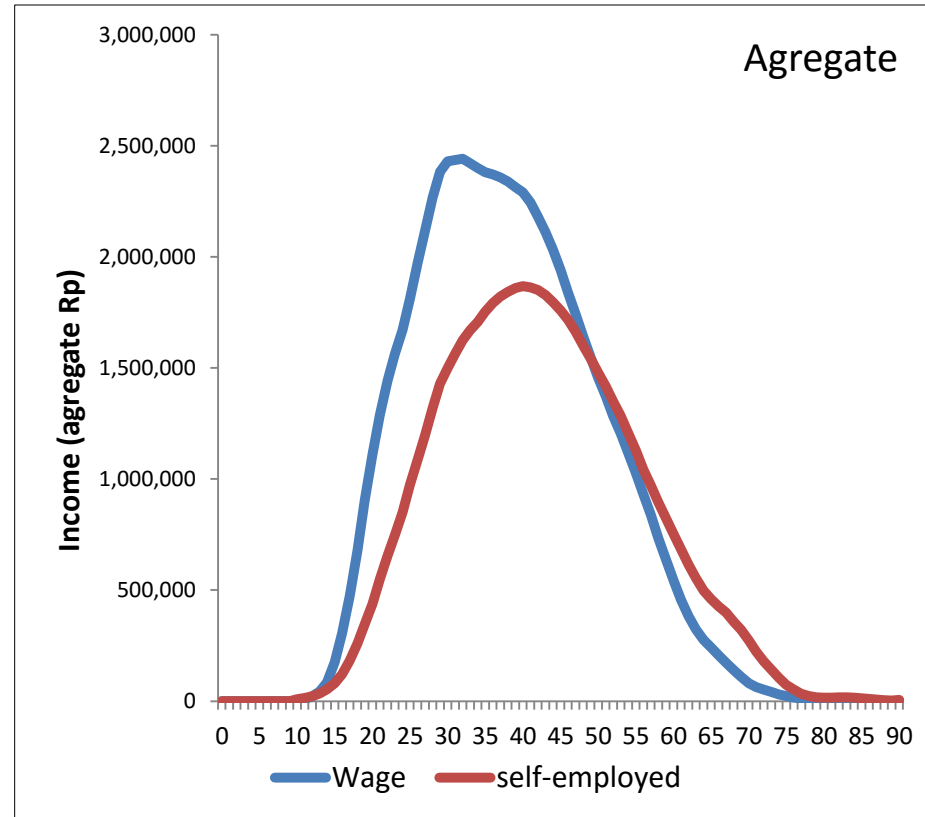
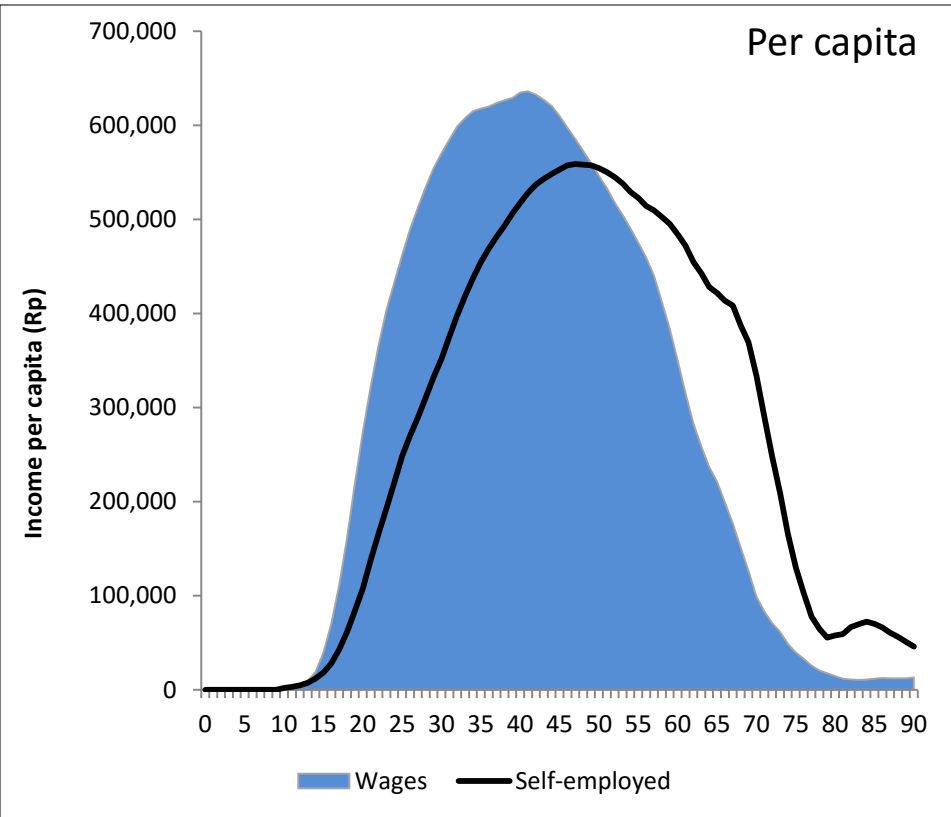
- SNA 2010
- Household Social Economic Survey 2012
- National Budget 2012
- UN Population Projection (2012)



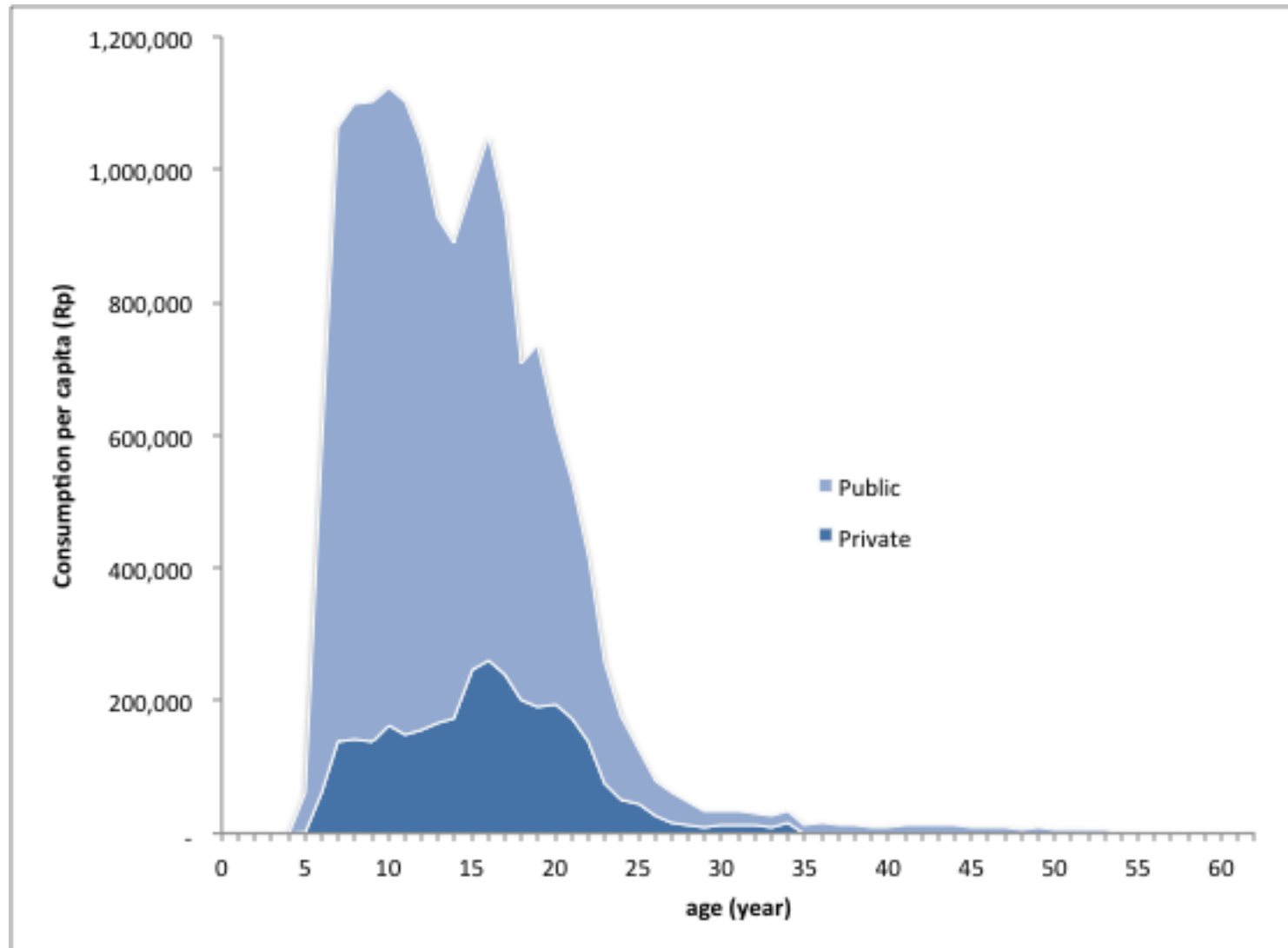
# POPULATION DISTRIBUTION BY AGE



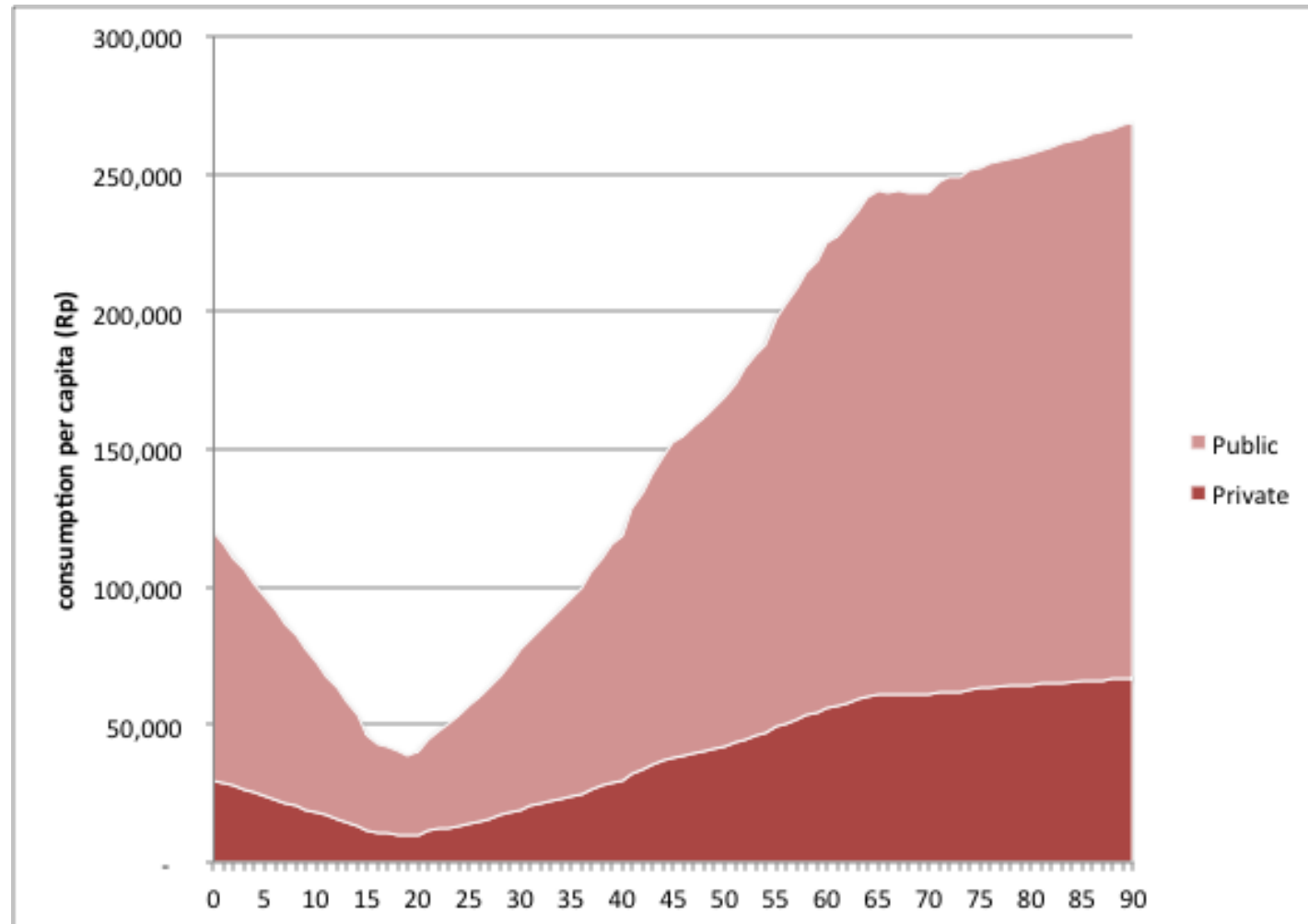
# Labour Income Profiles, 2012



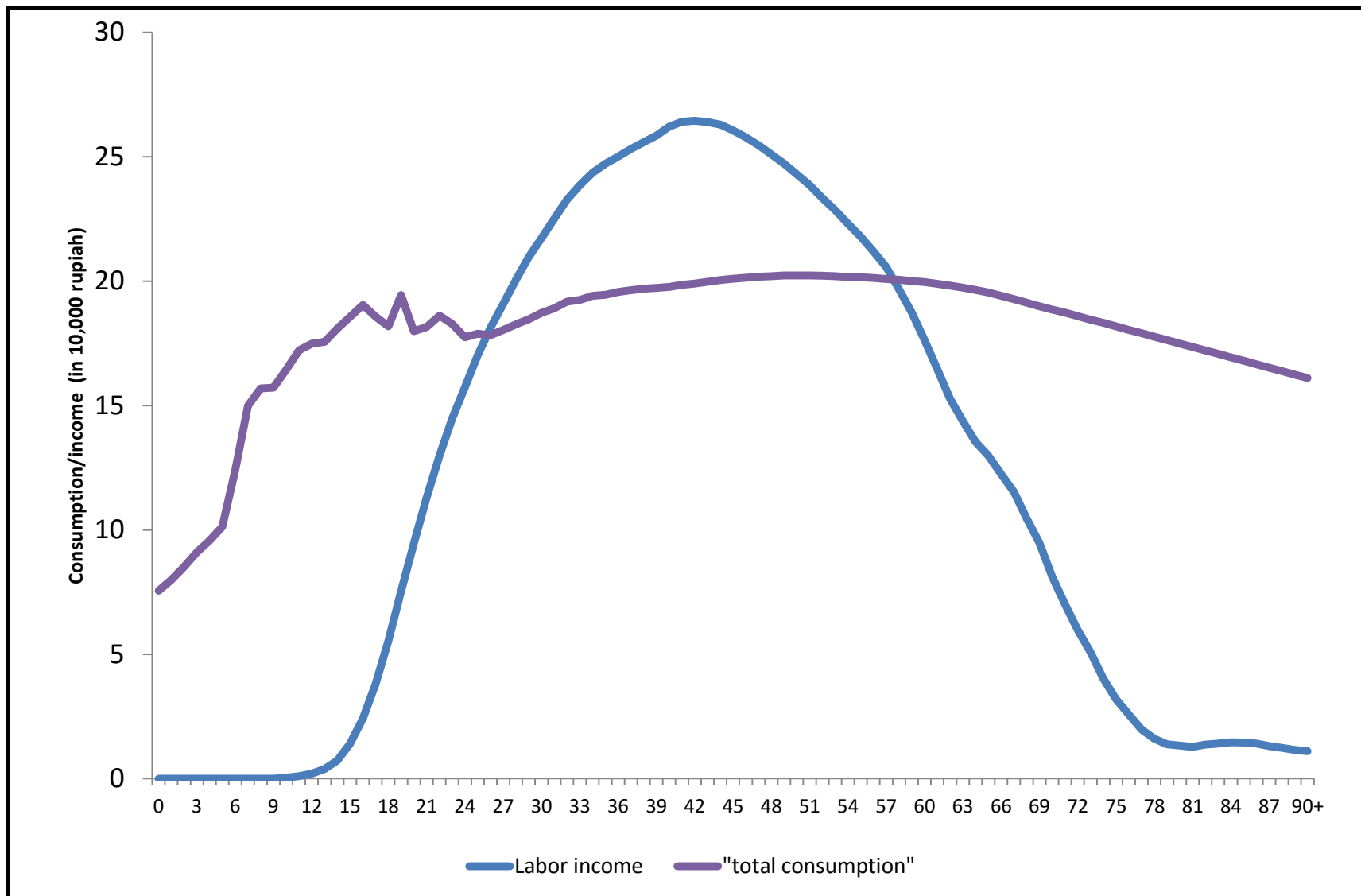
# Education Consumption Per Capita (2012)



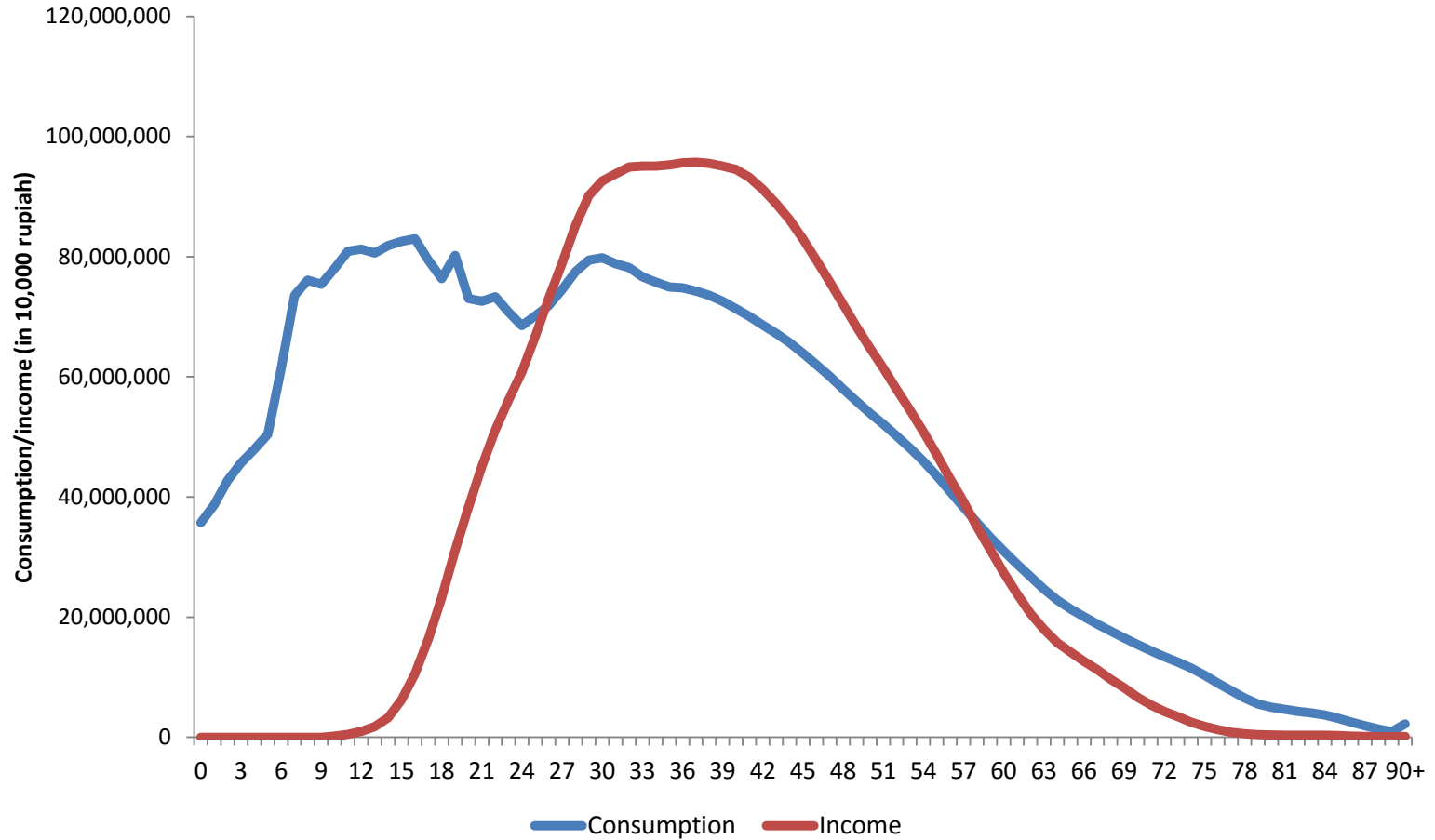
# Health Consumption Per Capita (2012)



# Labour Income and Consumption per Capita

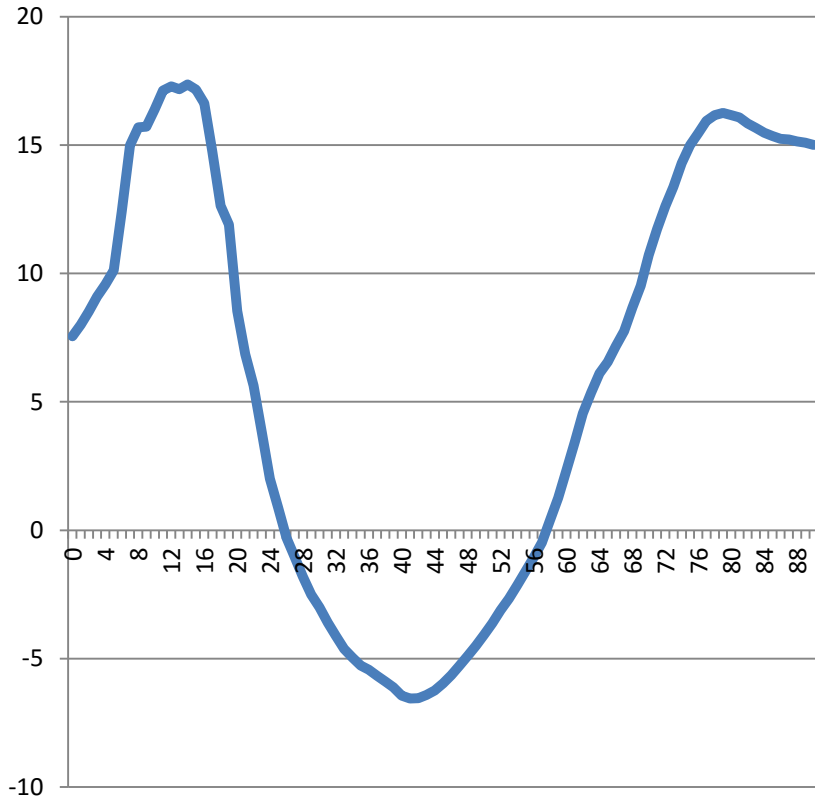


# Aggregate Labour Income and Consumption

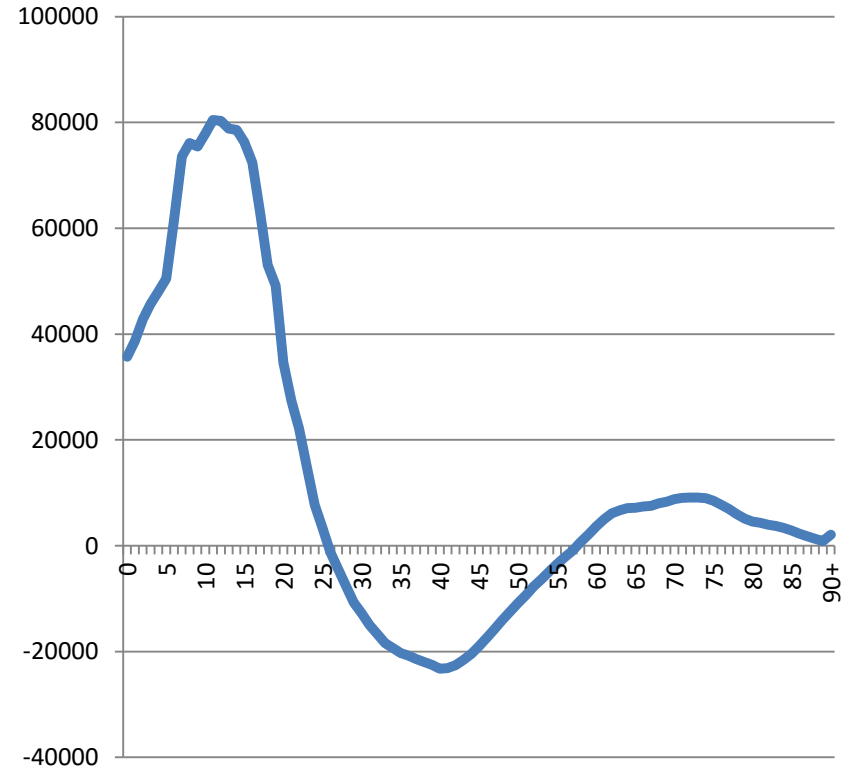


# Life Cycle Deficit

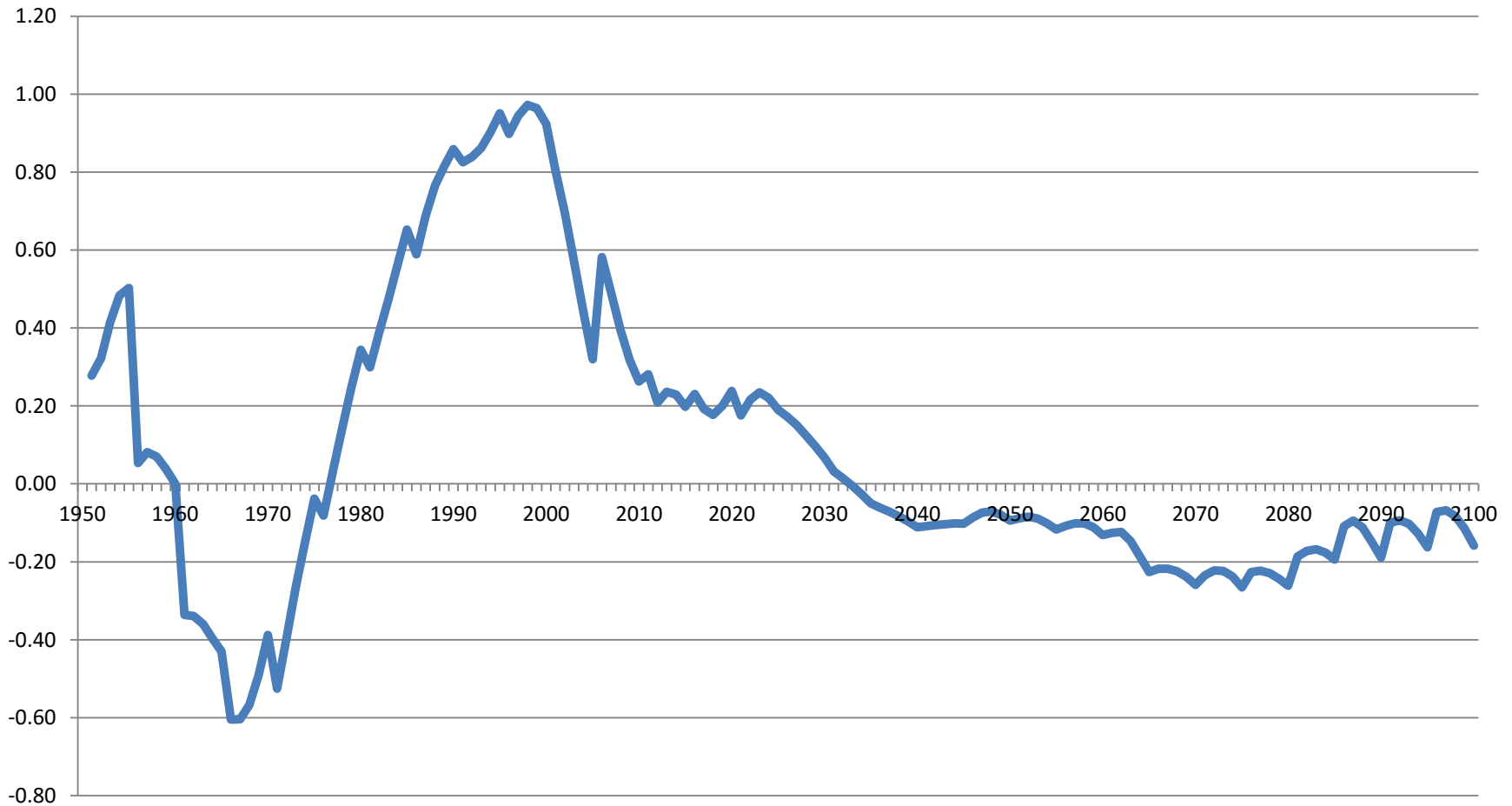
Per capita life deficit



Aggregate life deficit



# Growth of Support Ratio, 1950-2100





# Next Steps

- Follow up meetings
- Clarifying preliminary results
- Identifying applications and policy implications

# Terima Kasih!

