

Introducing National Transfer Account (NTA) in Nepal



Rishi Ram Sigdel
Tirtha Raj Baral



Government of Nepal
National Planning Commission Secretariat
Central Bureau of Statistics
Kathmandu, Nepal



Presentation Outline

Introduction

Demographic context

Socio-economic indicators

Available data sources

Possible agencies

Issues and Challenges



Major Demographic Indicators

- Total population : 26.4 Million (NPHC 2011)
- Projected population : 28.04 Million (CBS 2015)
- Annual population growth Rate : 1.35 (NPHC 2011)
- Population density : 180 (NPHC 2011)
- Total fertility rate : 2.52 (NPHC 2011) , 2.6 (NDHS 2011)
- Labour force participation rate (10⁺ Years): 54.20 (NPHC 2011)
- Total dependency ratio (2011): 75.56 (NPHC 2011)



Population of Nepal 1911-2011

Year	Total Population	Population Change	Growth Rate (Exponential)	Doubling Time
1911	5,638,749		-	-
1920	5,573,788	- 64,961	-0.13	-
1930	5,532,574	41,214	-0.07	-
1941	6,283,649	7,51,075	1.16	60
1952-54	8,256,625	19,72,976	2.28	31
1961	9,412,996	11,56,371	1.64	42
1971	11,555,983	21,42,987	2.05	34
1981	15,022,839	34,66,856	2.62	26
1991	18,491,097	34,68,258	2.08	33
2001	23,151,423	46,60,326	2.25	31
2011	26,494,504	33,43,081	1.35	52

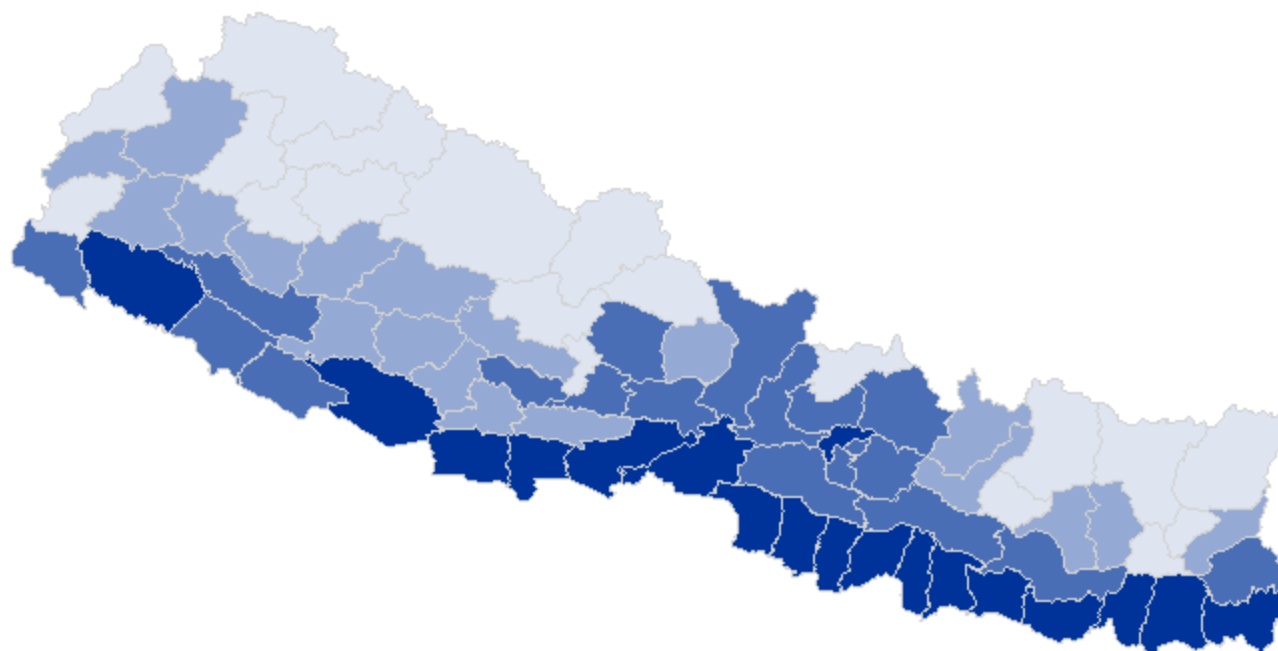
Source: Population Censuses of Nepal, CBS



Population Size by Districts 2011

Population size

Number Total



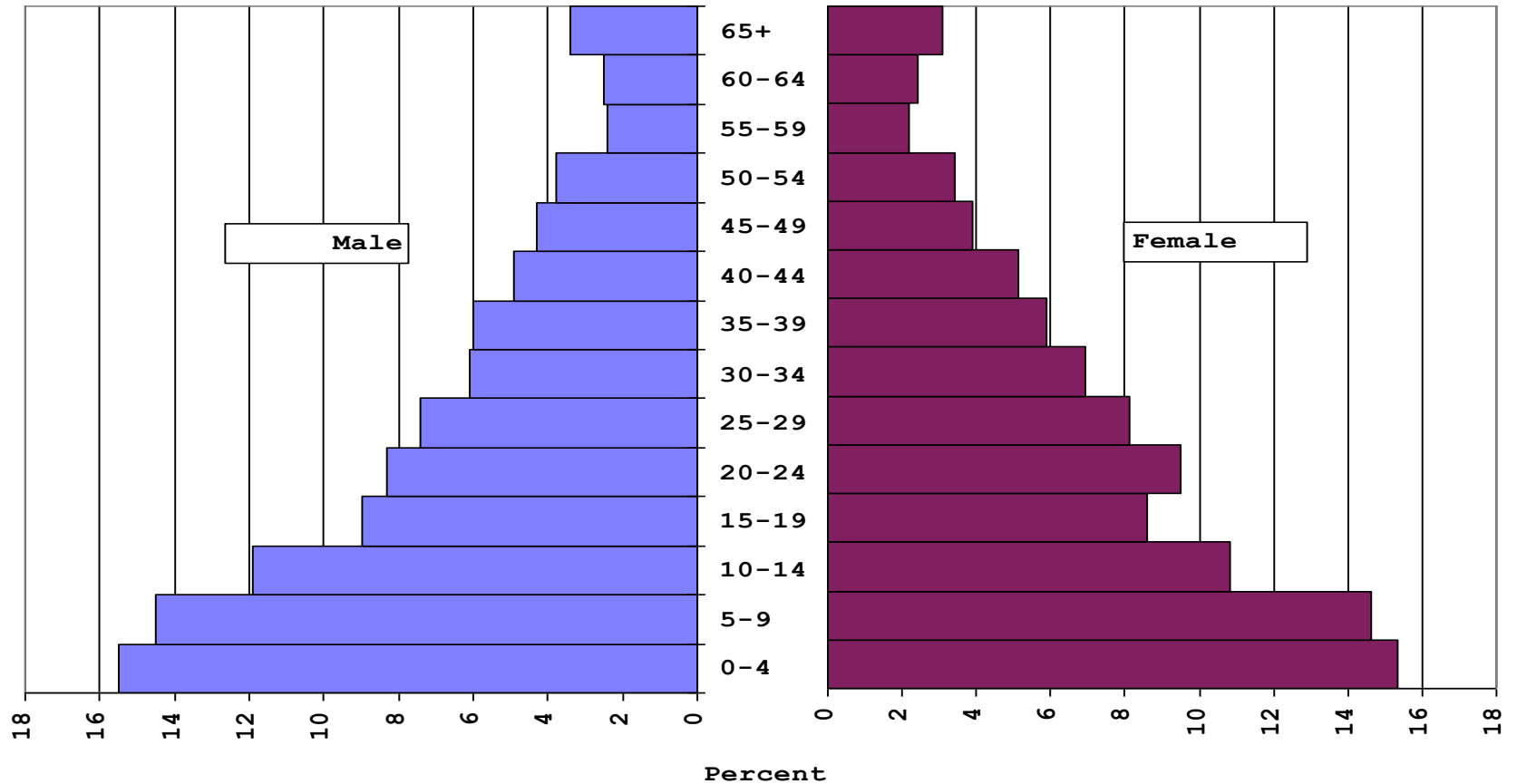
Total

Label 1	6,538 - 163,412	(19)
Label 2	163,413 - 268,613	(19)
Label 3	268,614 - 492,098	(19)
Label 4	492,099 - 1,744,240	(18)
Missing Value		(0)

Source: Population Census of Nepal, 2011



Population Pyramid of Nepal 1981

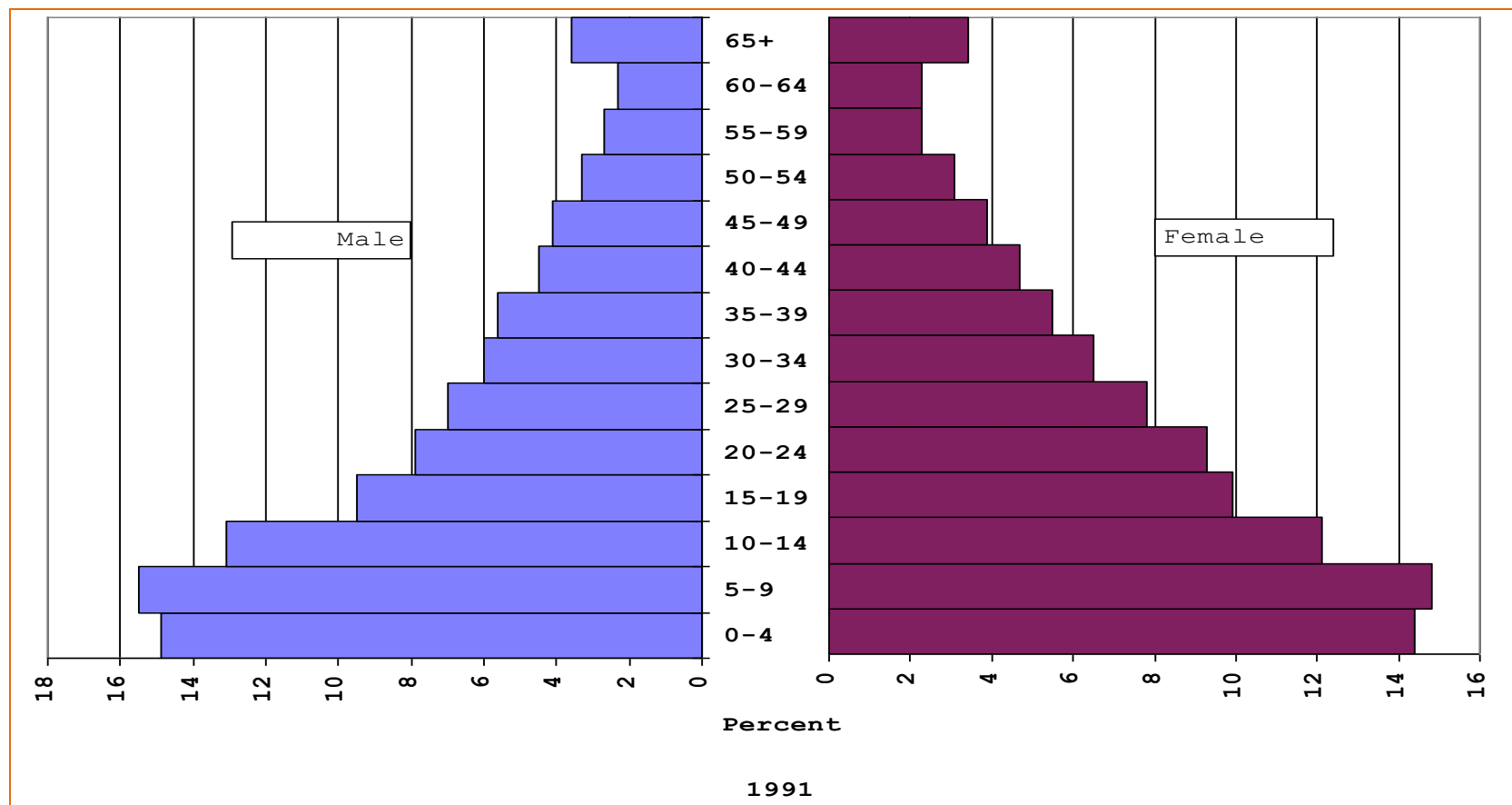


1981

Source: Population Census of Nepal, 1981



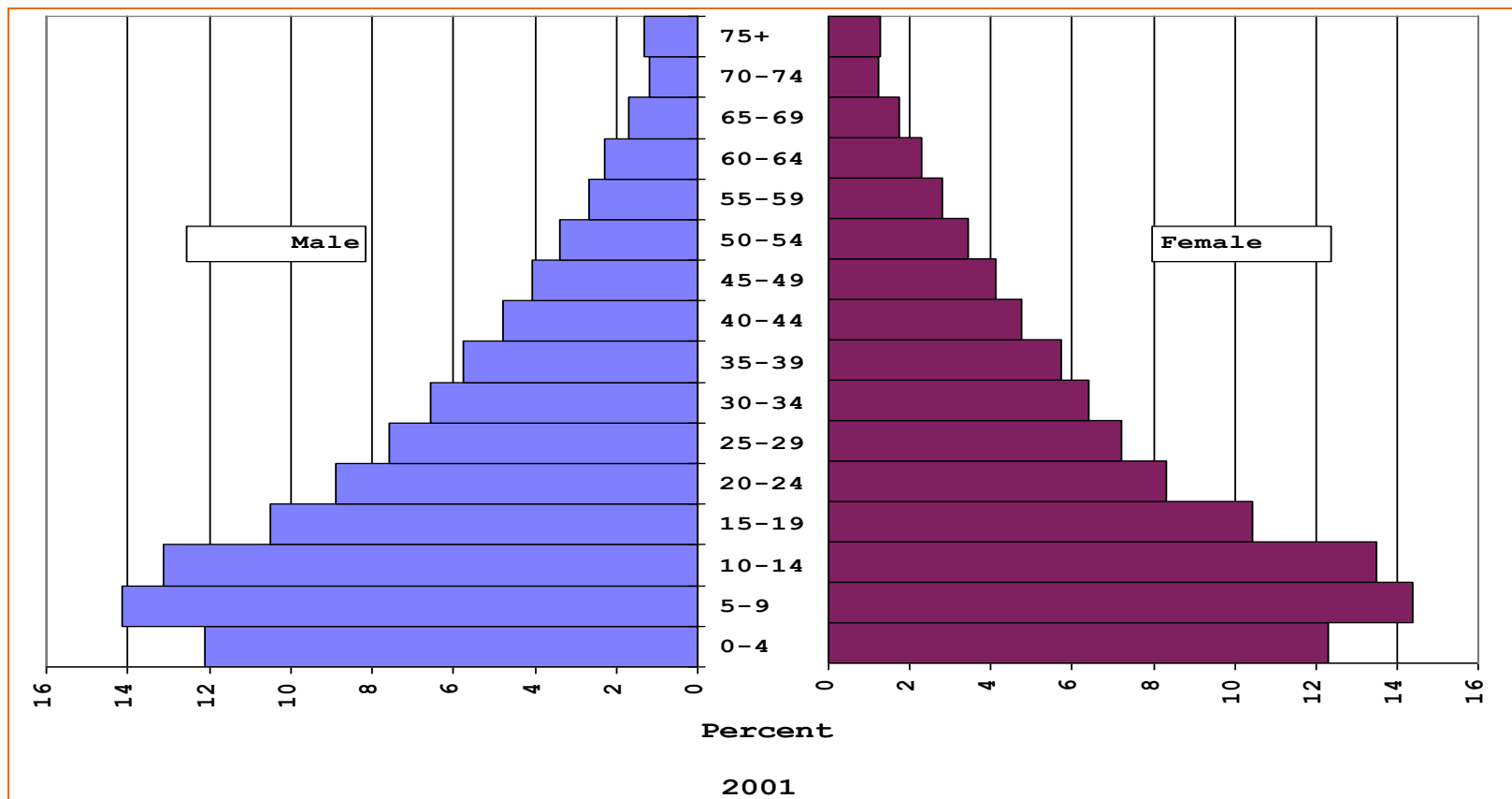
Population Pyramid of Nepal 1991



Source: Population Census of Nepal, 1991



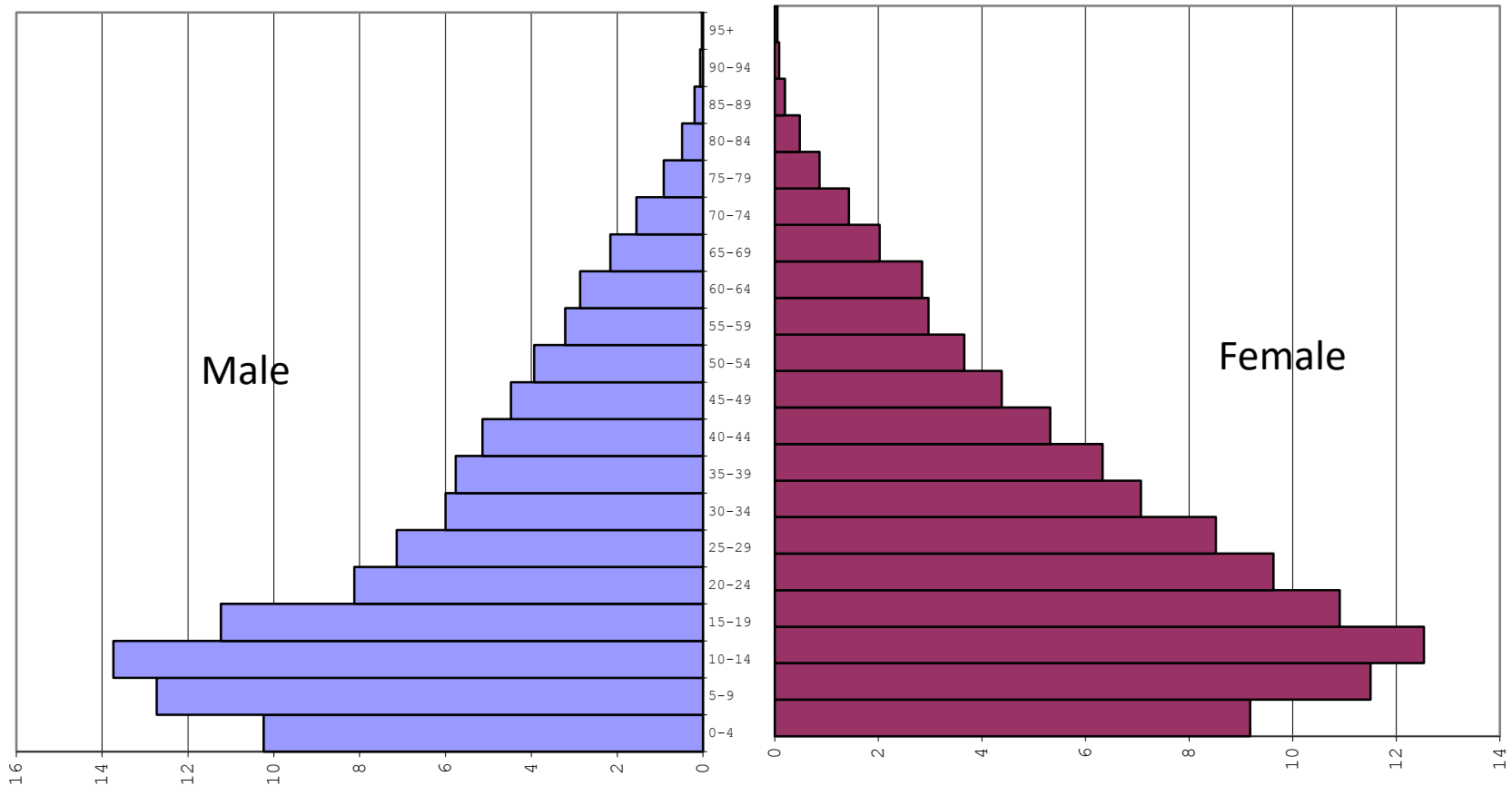
Population Pyramid of Nepal 2001



Source: Population Census of Nepal, 2001



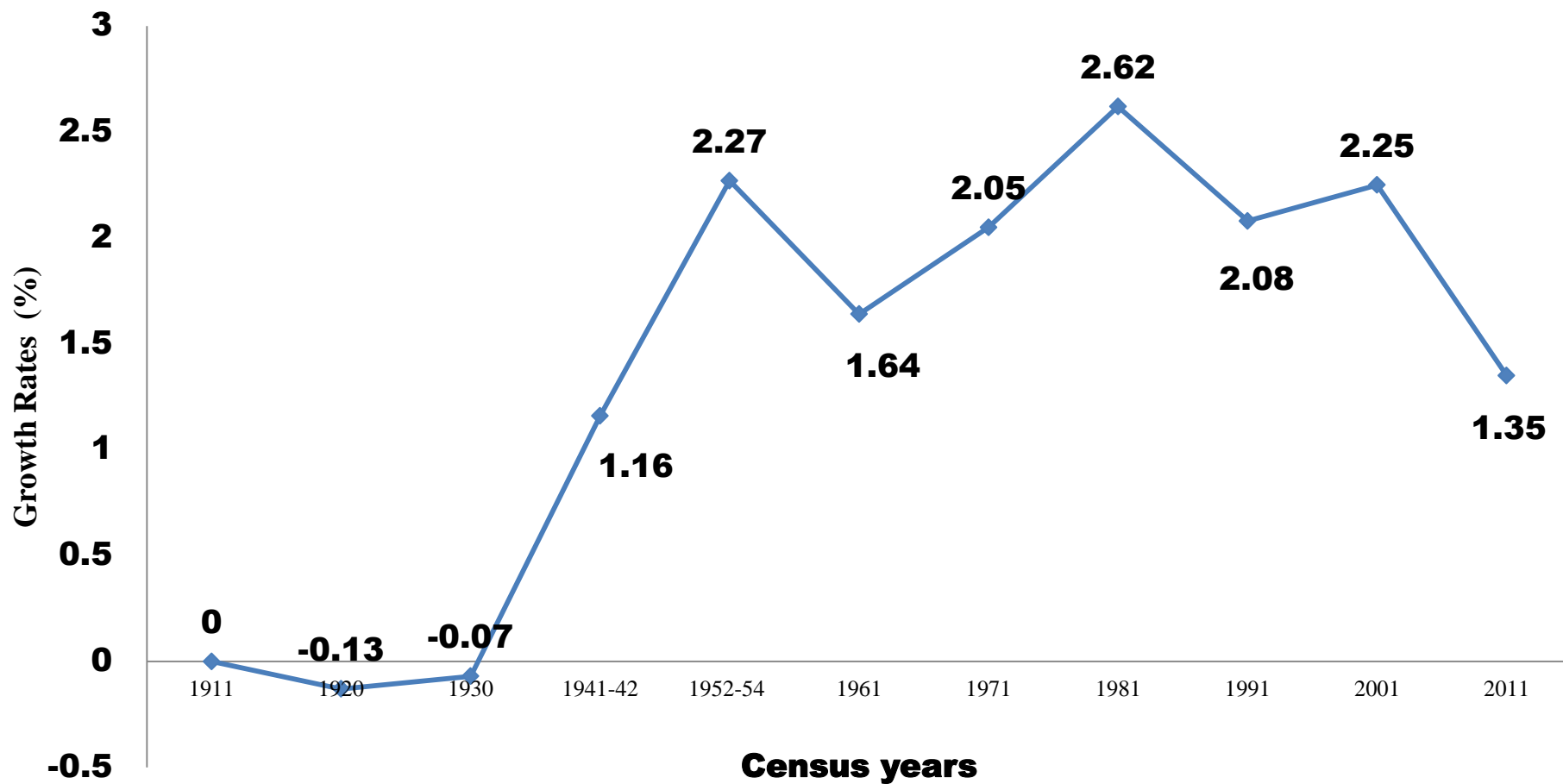
Population Pyramid of Nepal 2011



Source: Population Census of Nepal, 2011



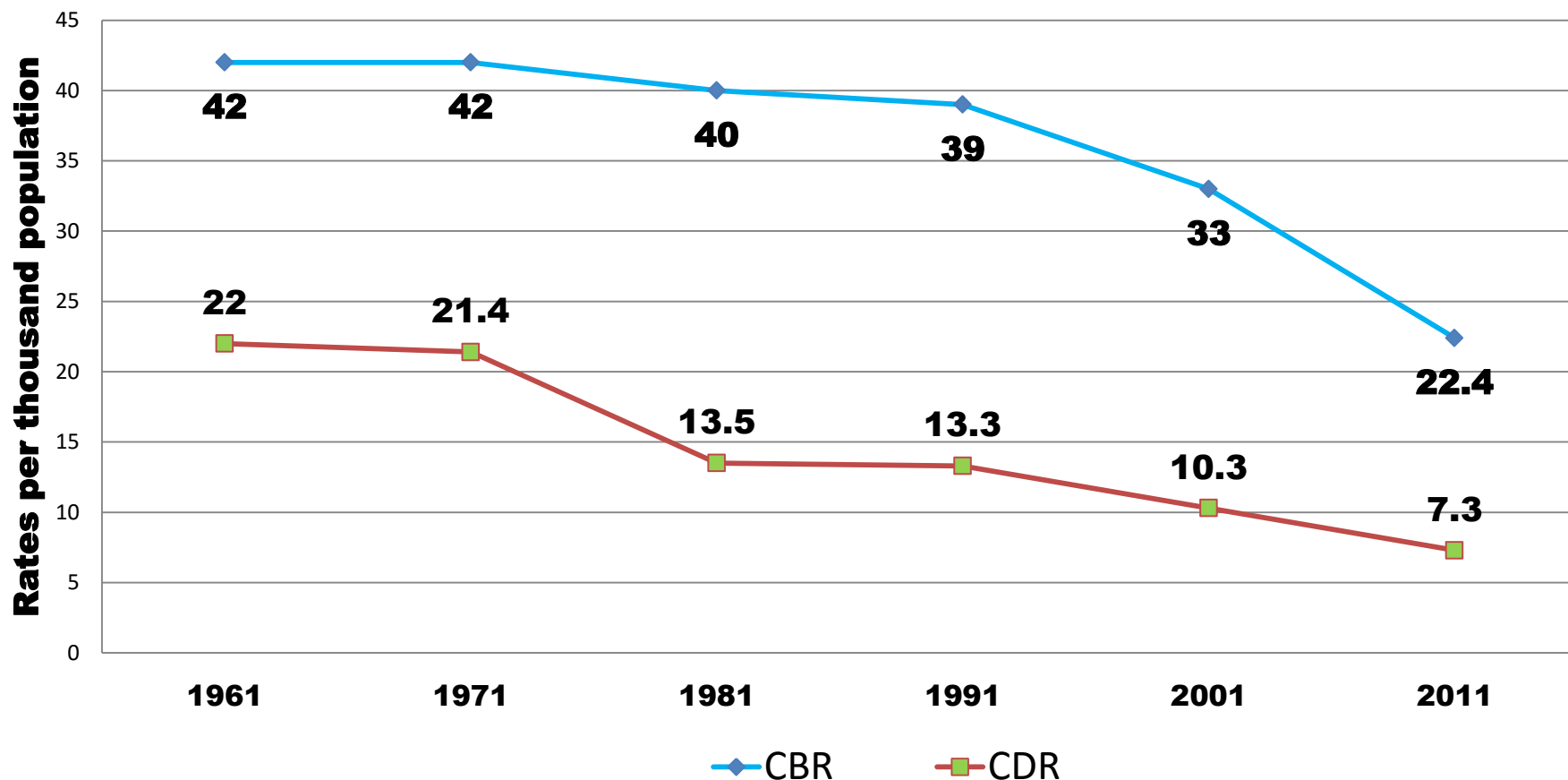
Annual Population Growth Rate of Nepal



Source: Population Censuses of Nepal



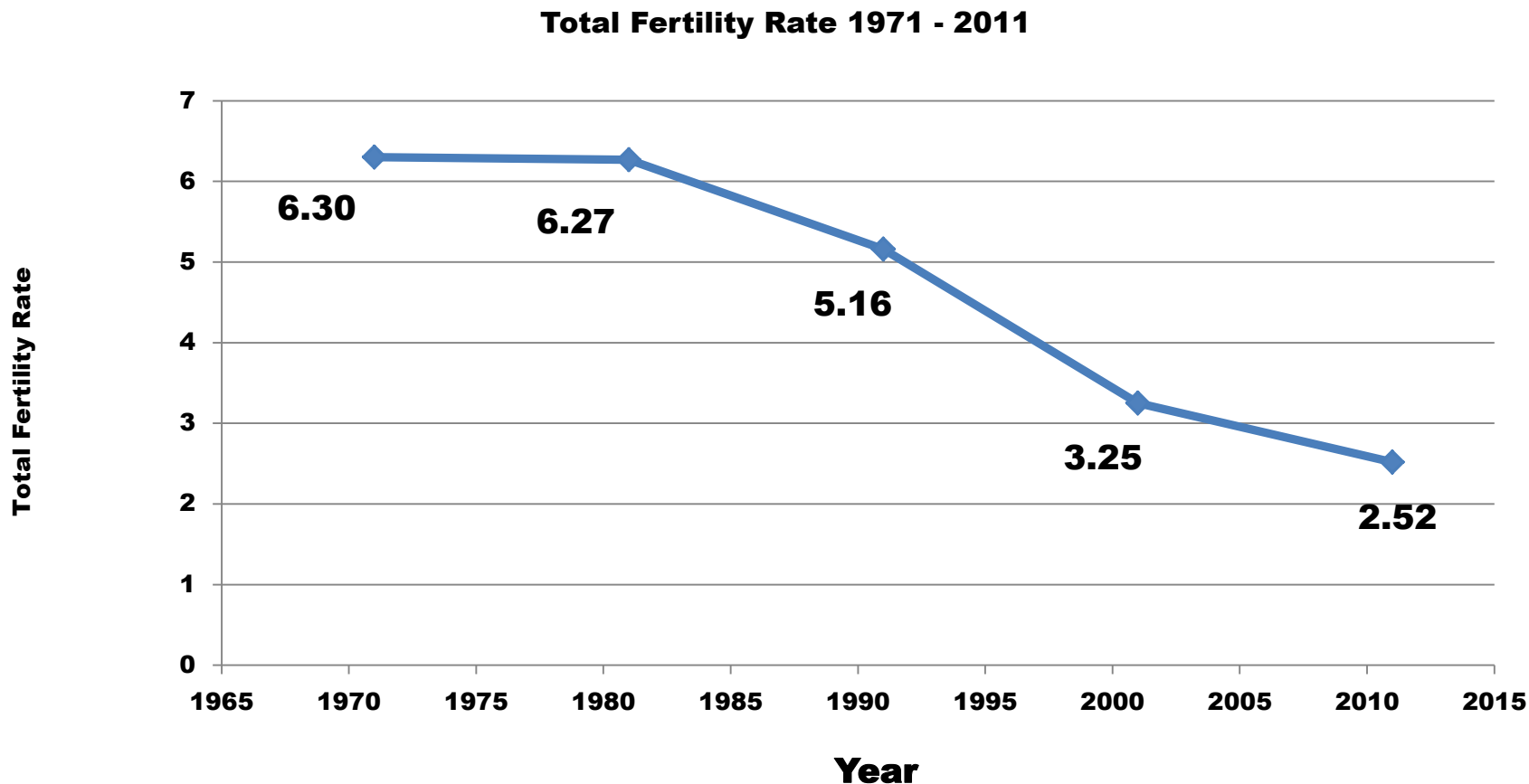
Trends of CBR and CDR



Source: Population Censuses of Nepal



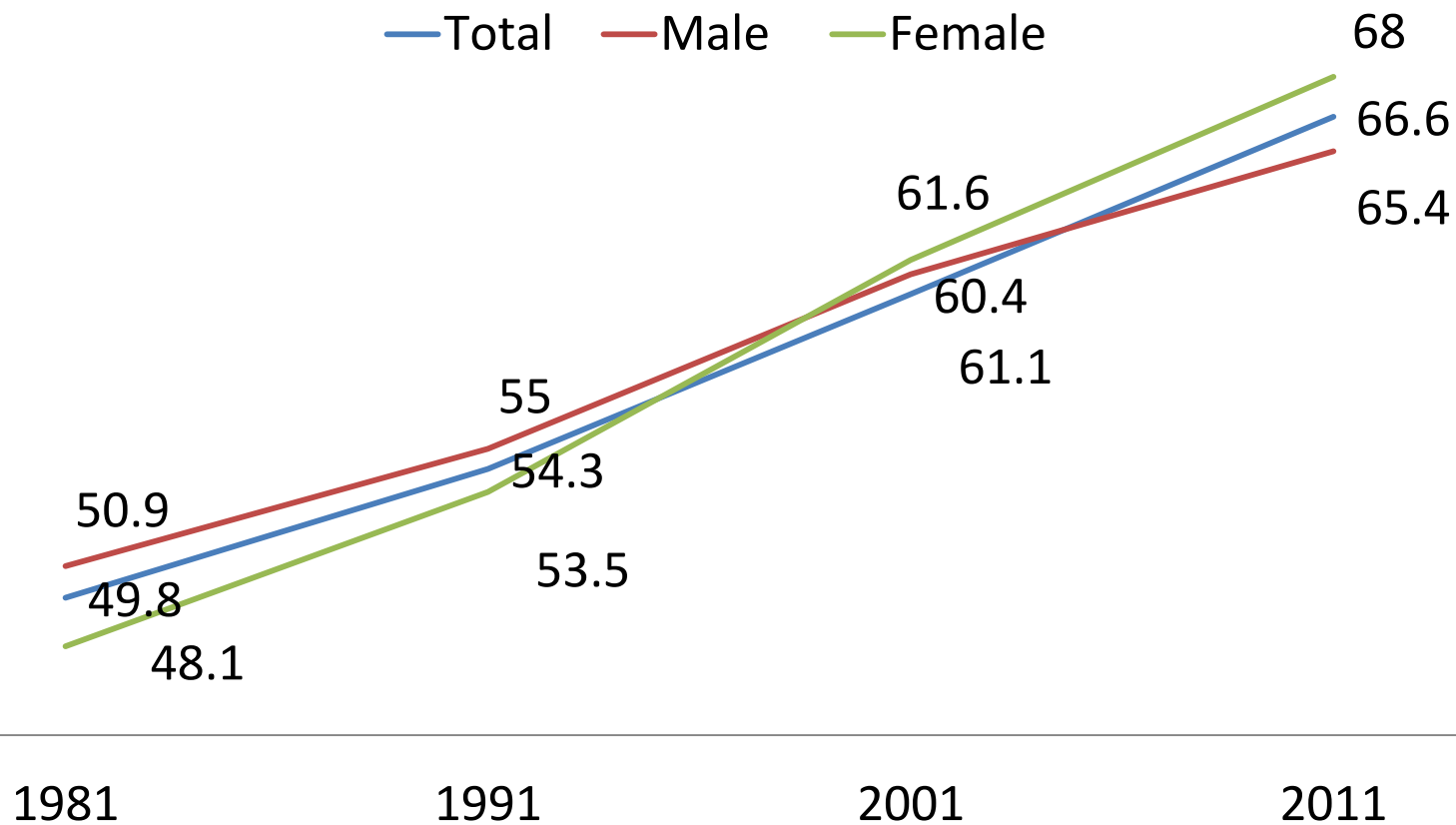
Total Fertility Rates of Nepal



Source: Population Censuses of Nepal



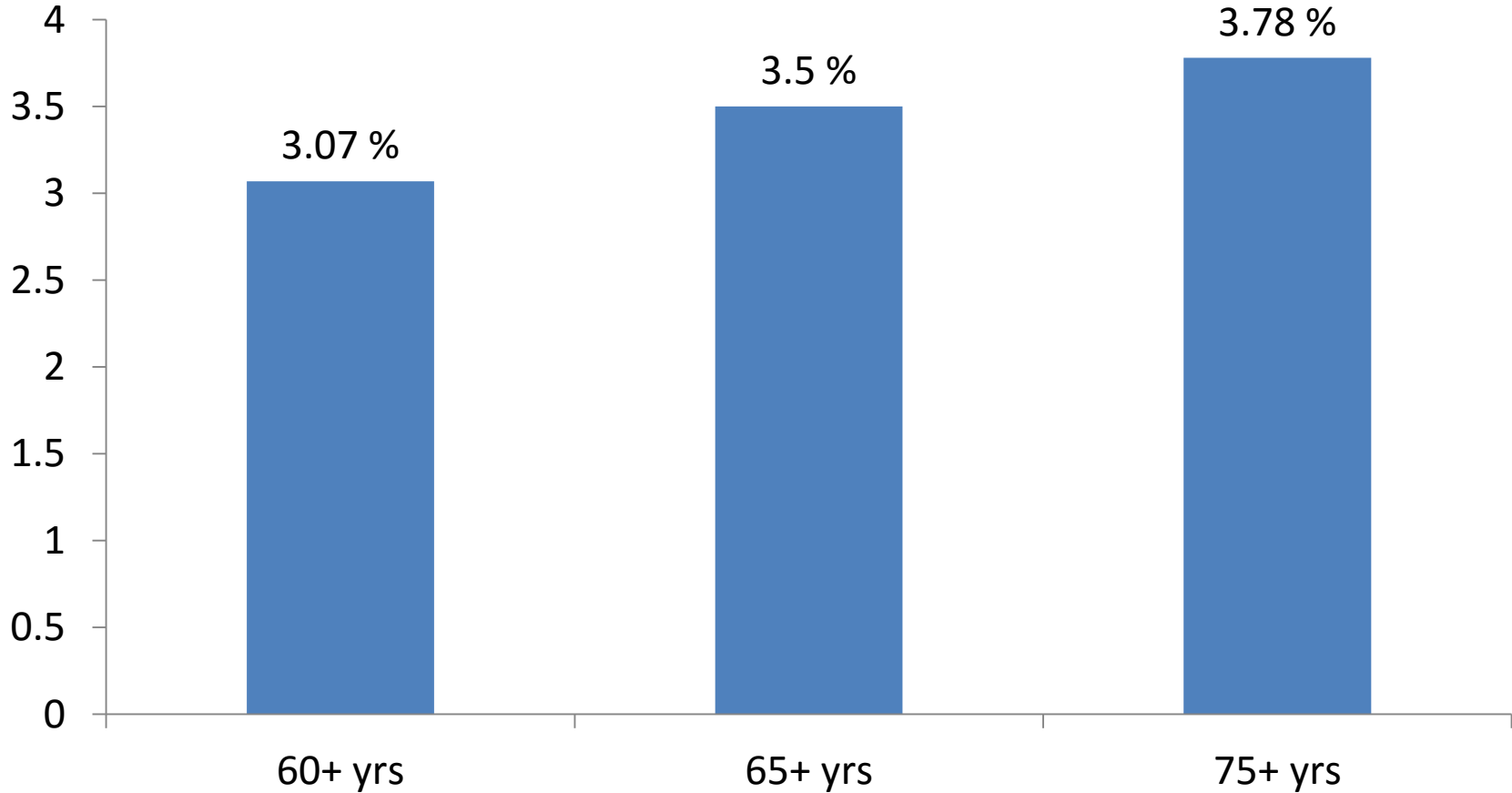
Life Expectancy at Birth



Source: Population Censuses of Nepal



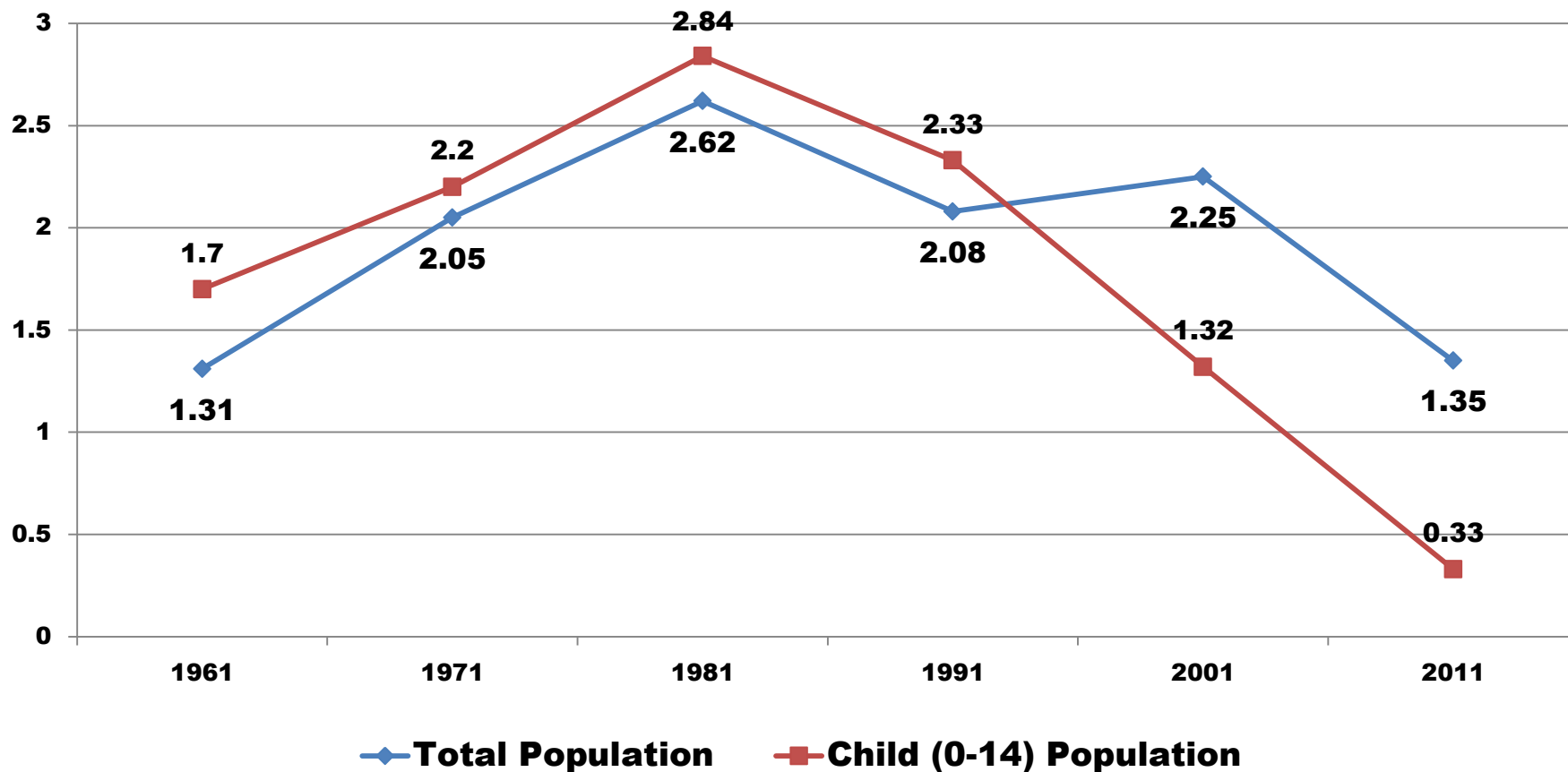
Growth Rate of Elder Population (1981–2011)



Source: Population Censuses of Nepal



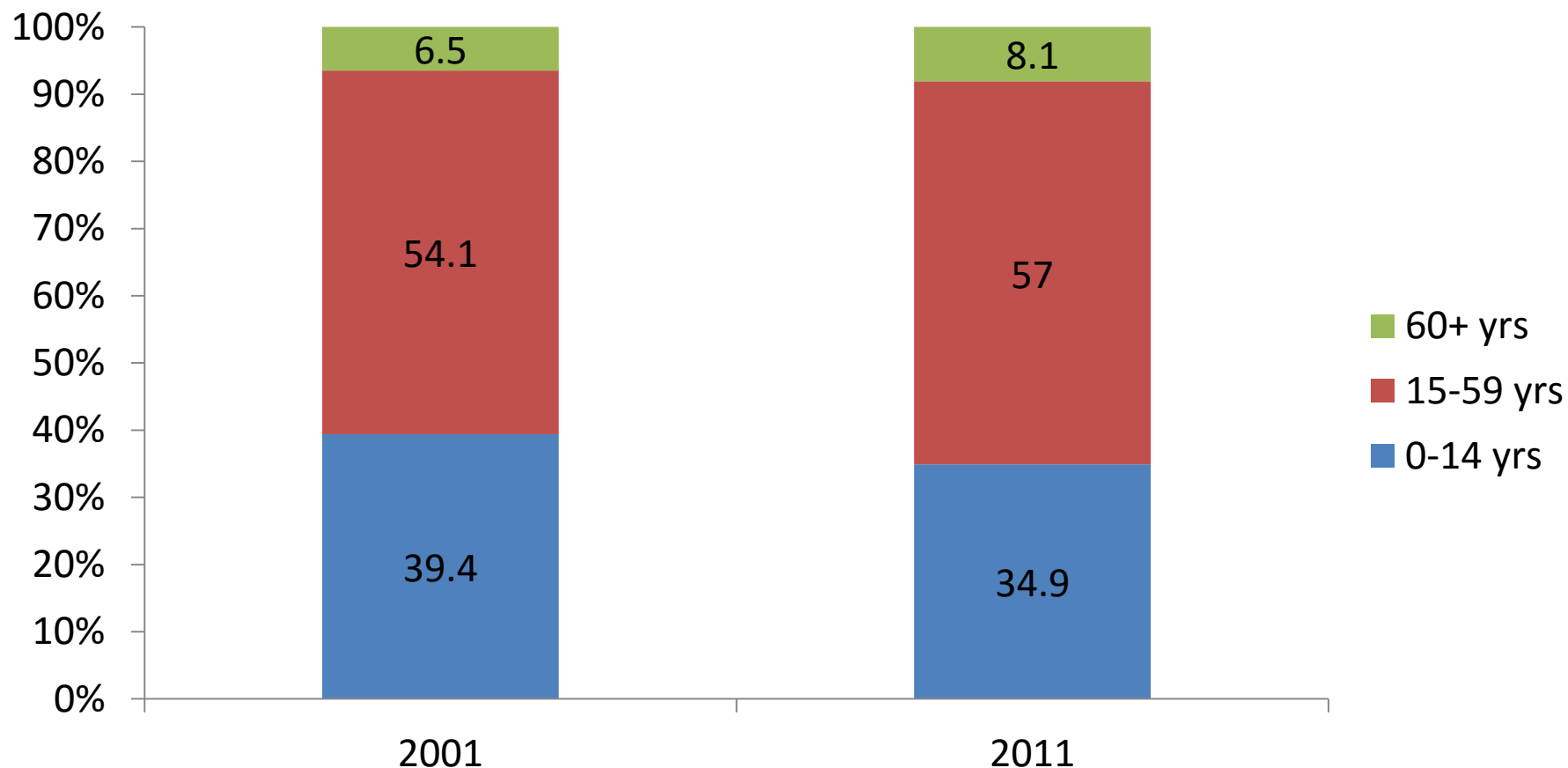
Growth Rate of Child and Total Population



Source: Population Censuses of Nepal



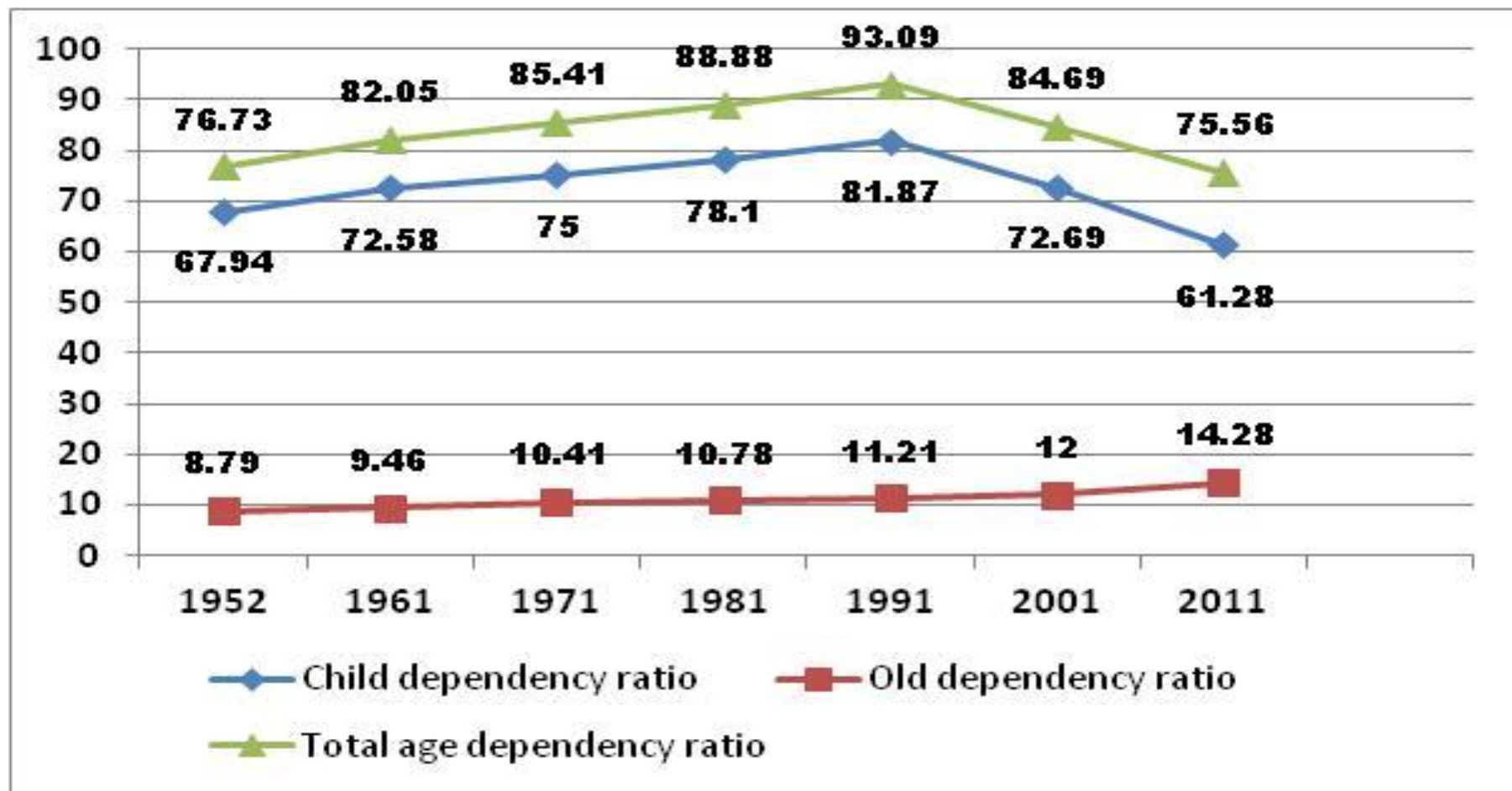
Demographic Dividend



Source: Population Censuses of Nepal



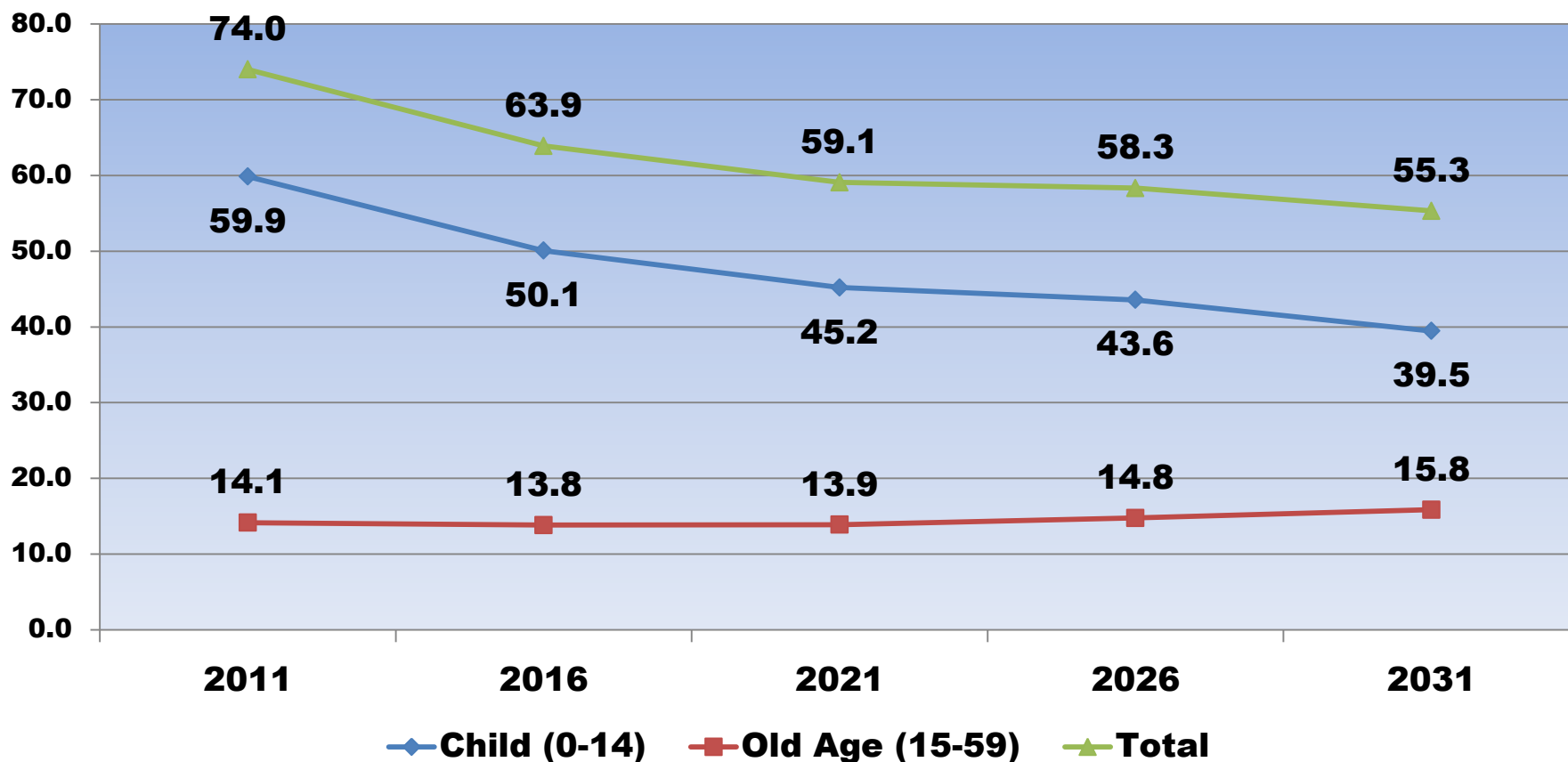
Dependency Ratio



Source: Population Censuses of Nepal



Dependency Ratio (Projected)

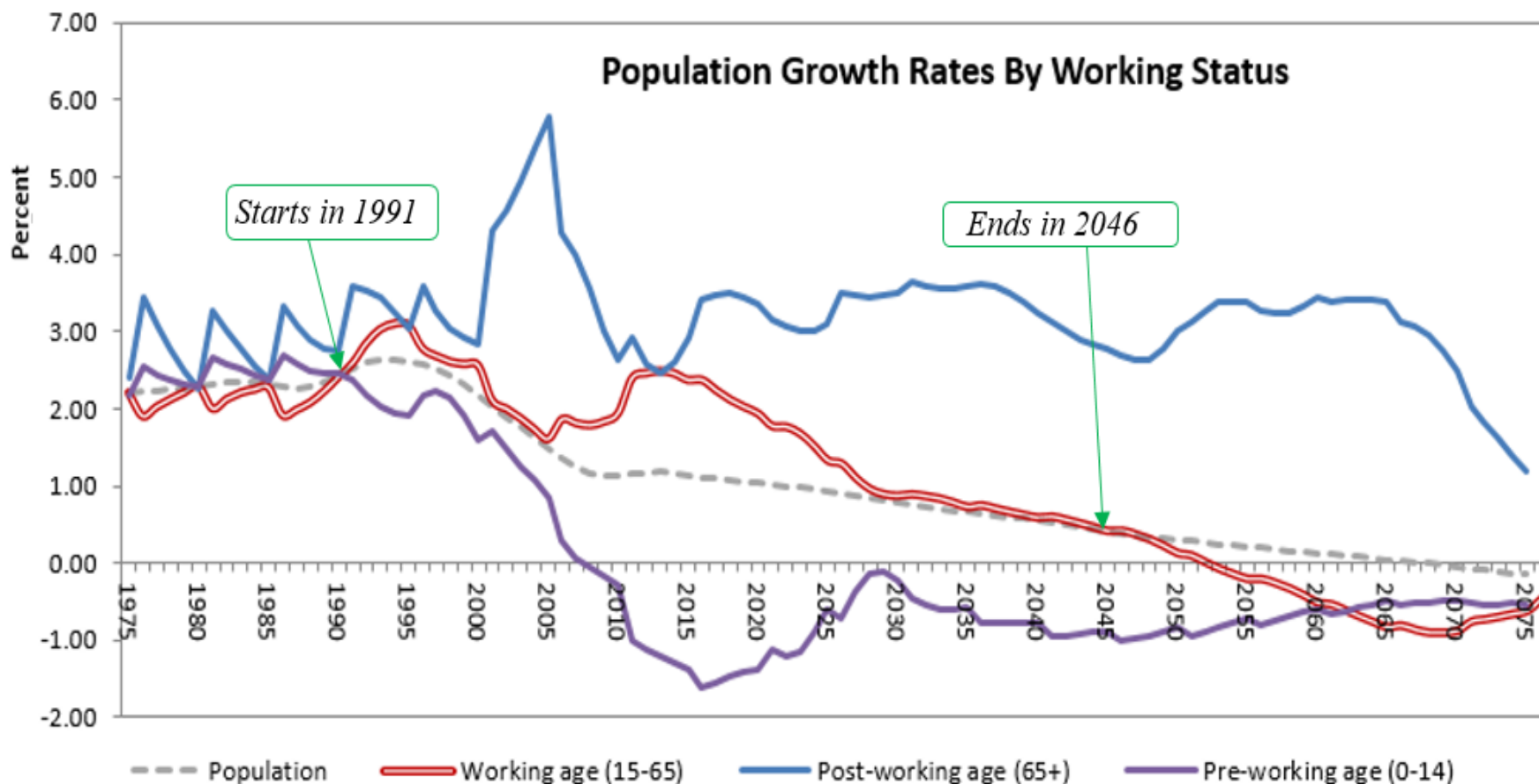


Source: Population Projection, CBS



Demographic Window of Opportunity

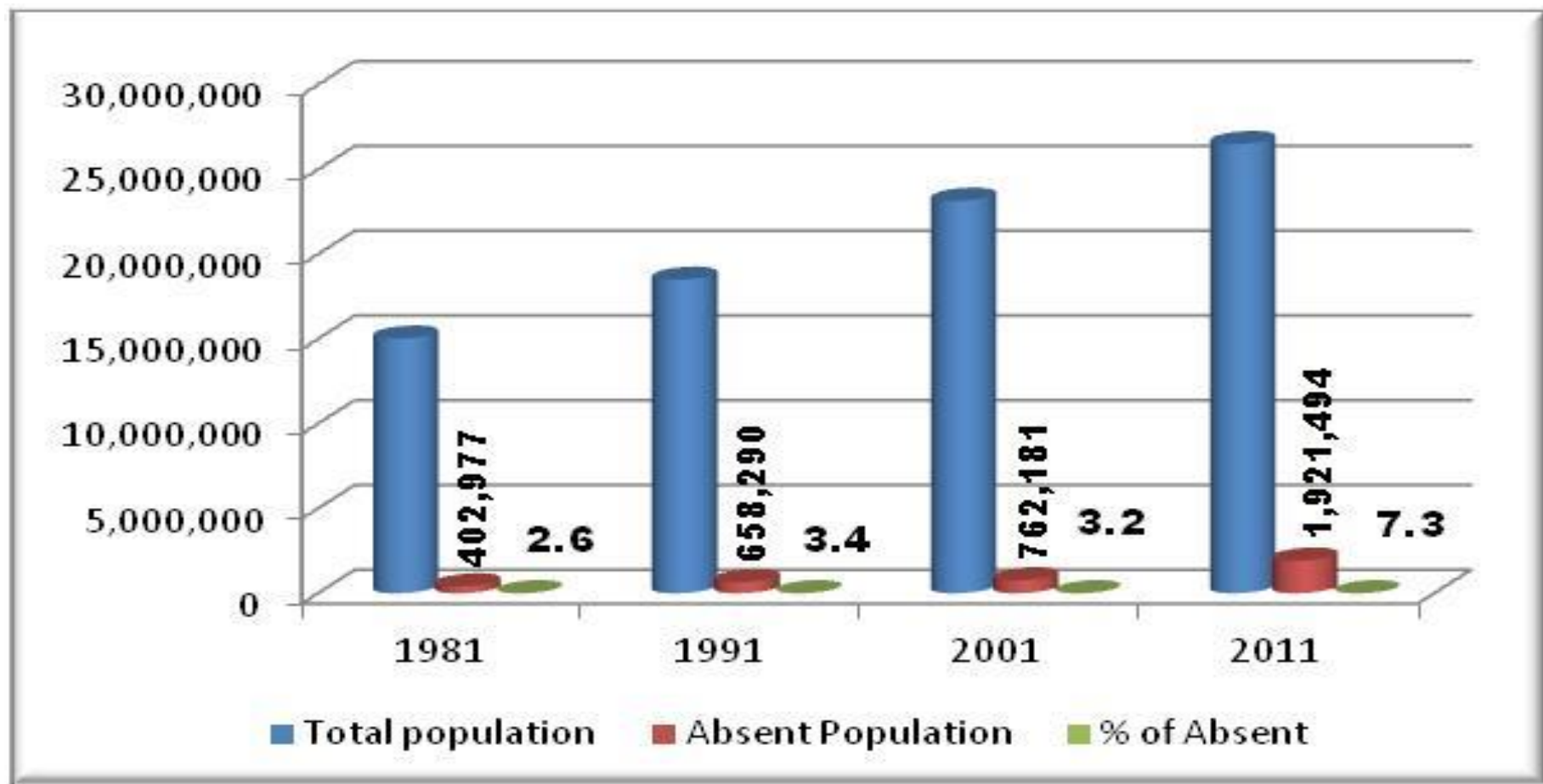
Trend and Decomposition by Age Group



Source: Calculation Based on data from (UN DESA 2013)



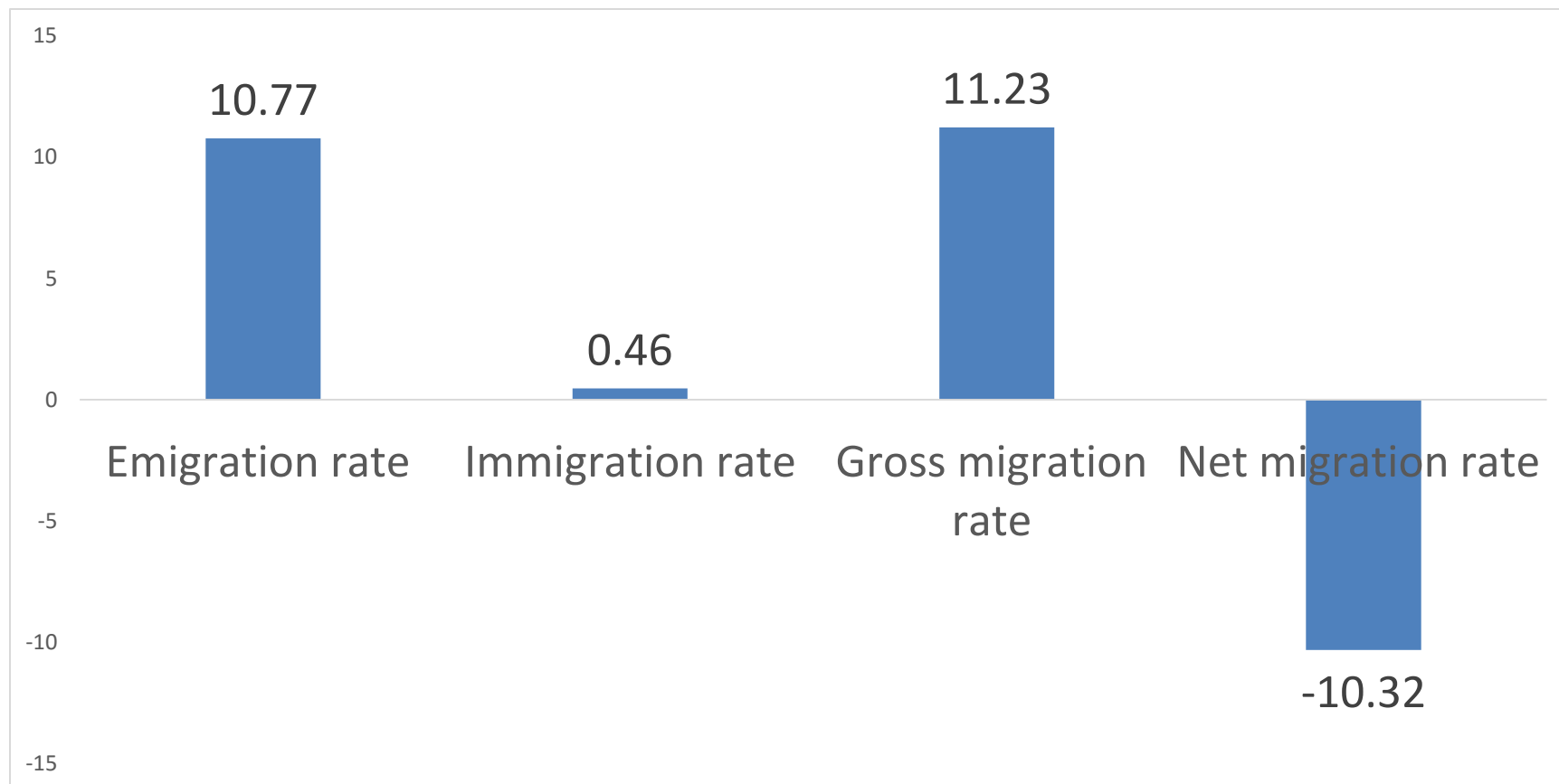
Absentee Population



Source: Population Censuses of Nepal, CBS



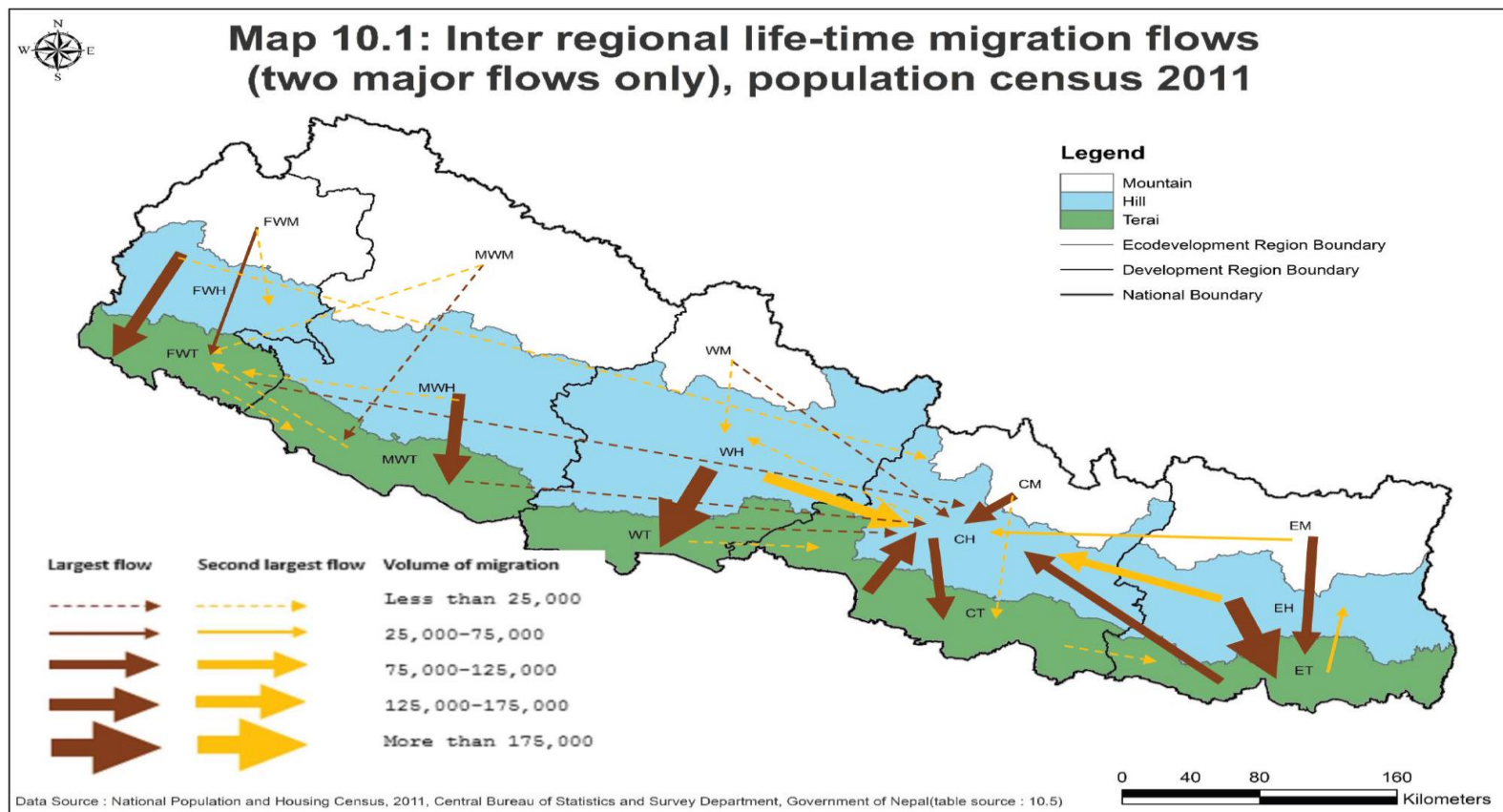
Migrants Rate, 2011



Source: Population Census of Nepal, 2011



Inter Regional Life Time Migration Flows



Source: Population Census of Nepal, 2011

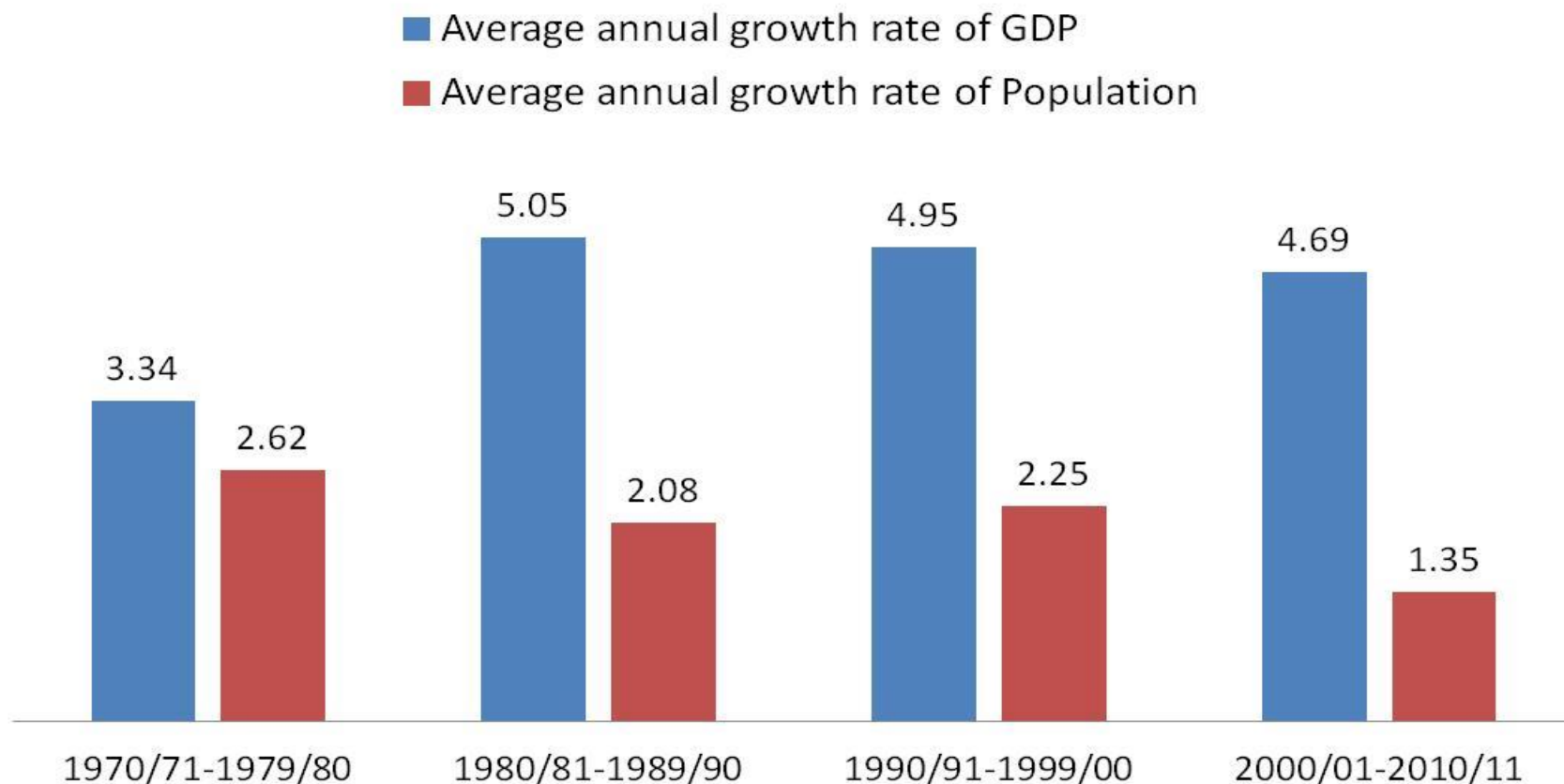


Economy

- Size of GDP : 19396 million US \$ in 2014
- Per capita GDP : 703 US\$
- Absolute Poverty : 25 % (2010)
- Unemployment rate: 2.1 % (2008)
- Remittance received (% of GDP): 30.21 (2014)
- Literacy rate: 66.6 % (2011)



Population Growth Rates and GDP

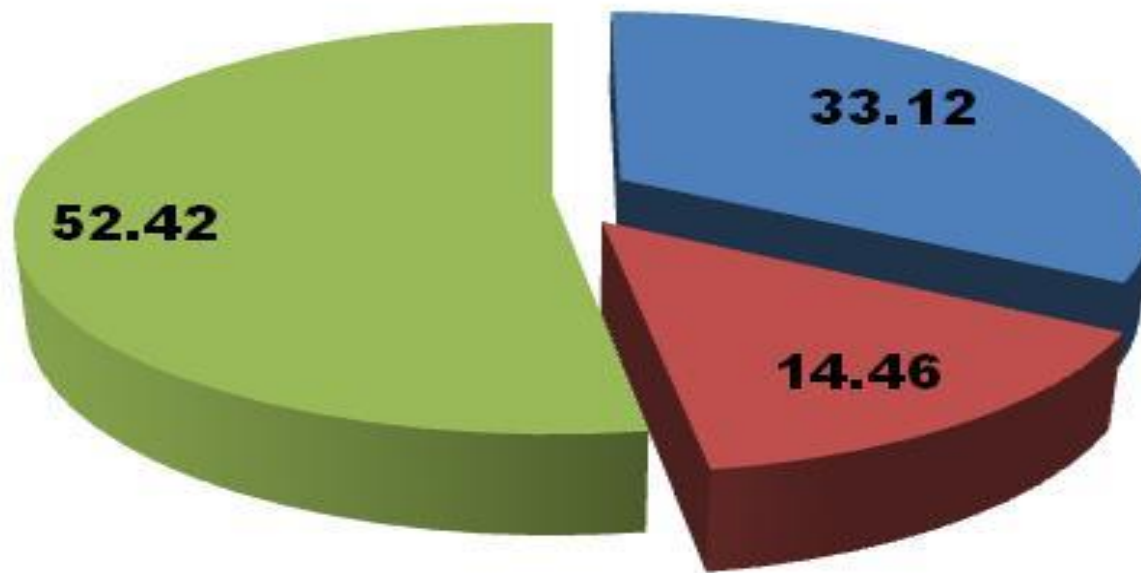


Source: Population Censuses of Nepal and National Accounts Estimates of Nepal, CBS



Composition of GDP

Composition of GDP (in percentage) - 2014

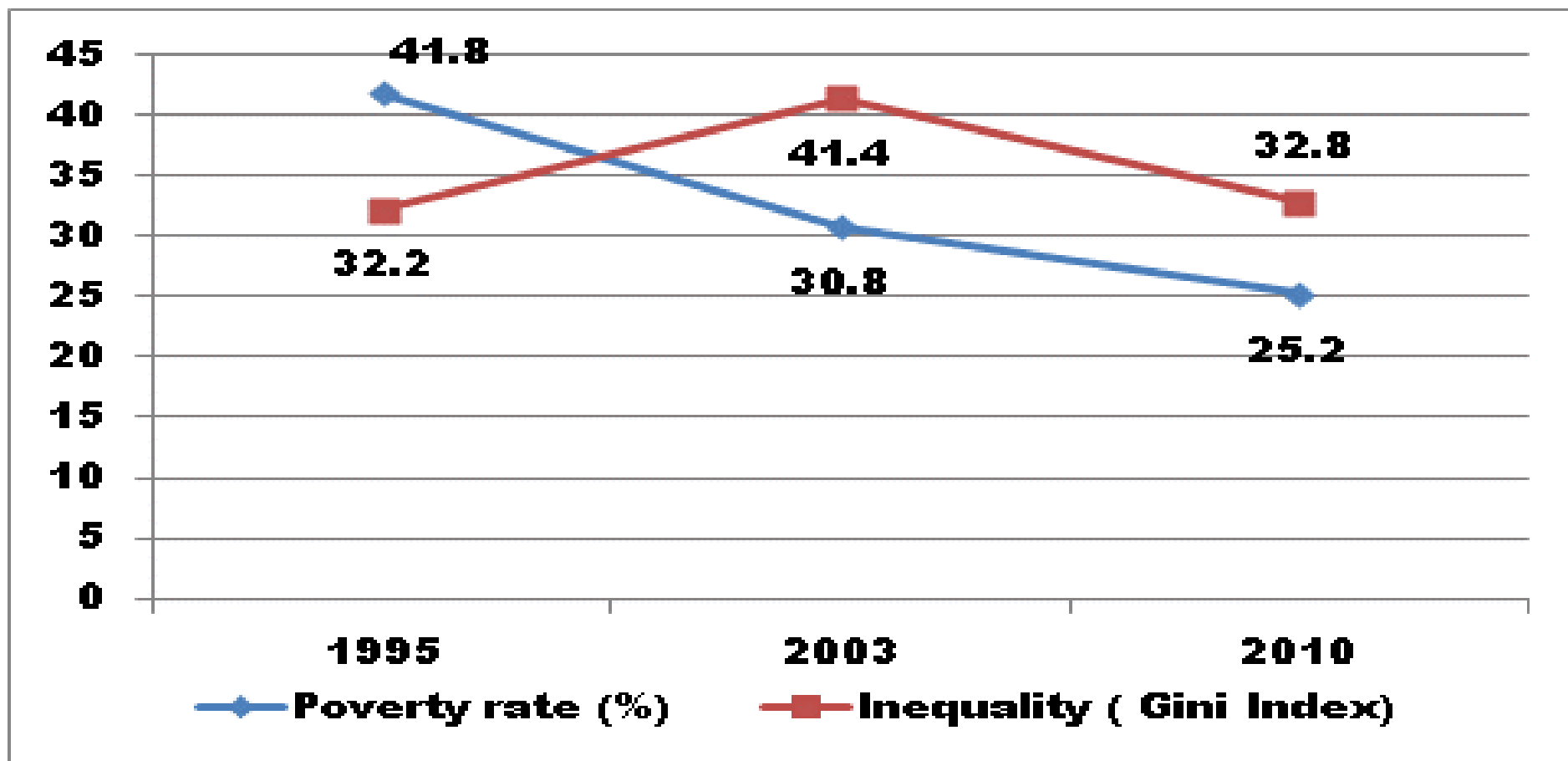


■ Primary Sector ■ Secondary Sector ■ Tertiary Sector

Source: National Accounts Estimates of Nepal, CBS



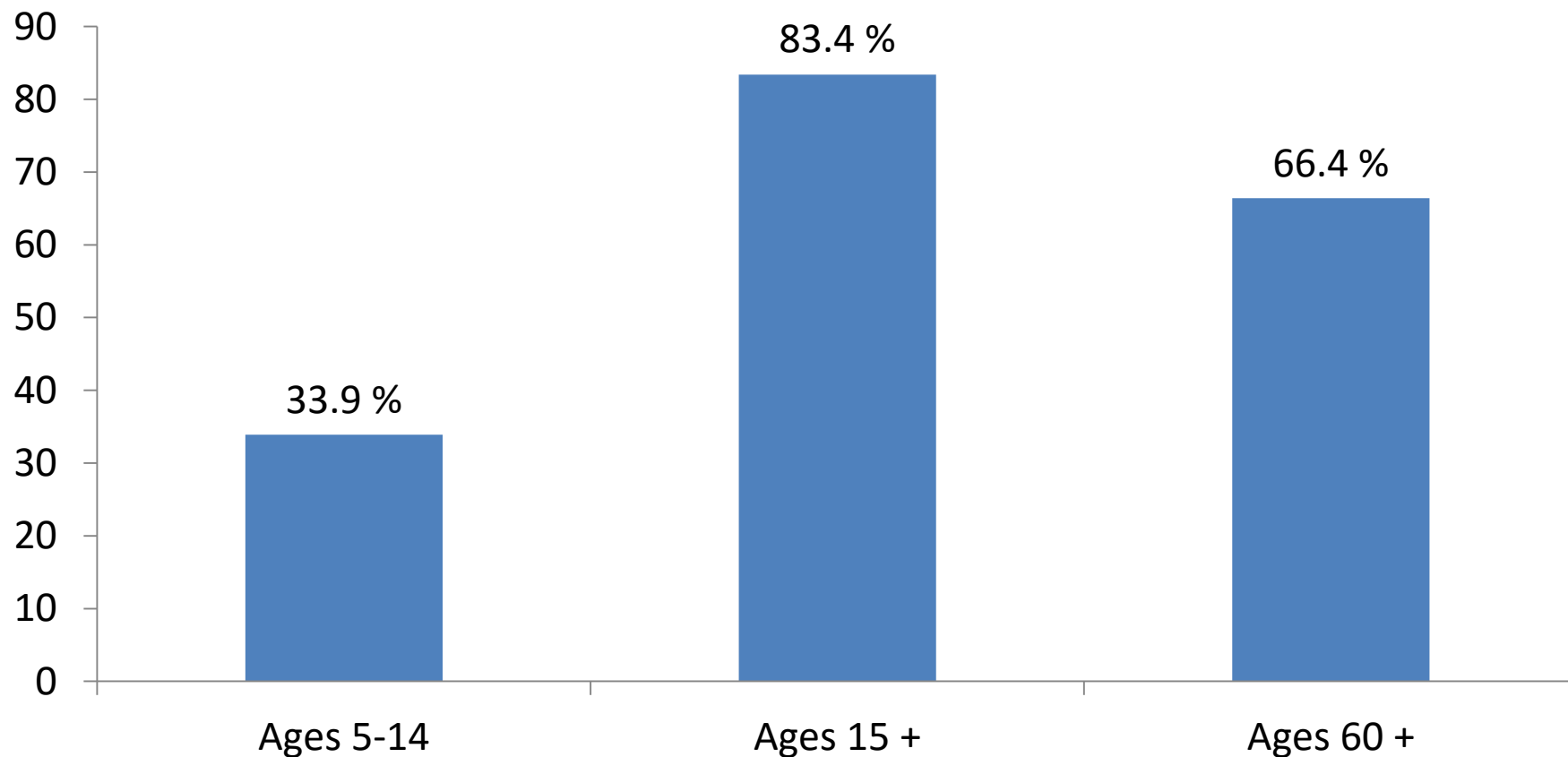
Poverty and Inequality in Nepal



Source: Nepal Living Standard Surveys, CBS



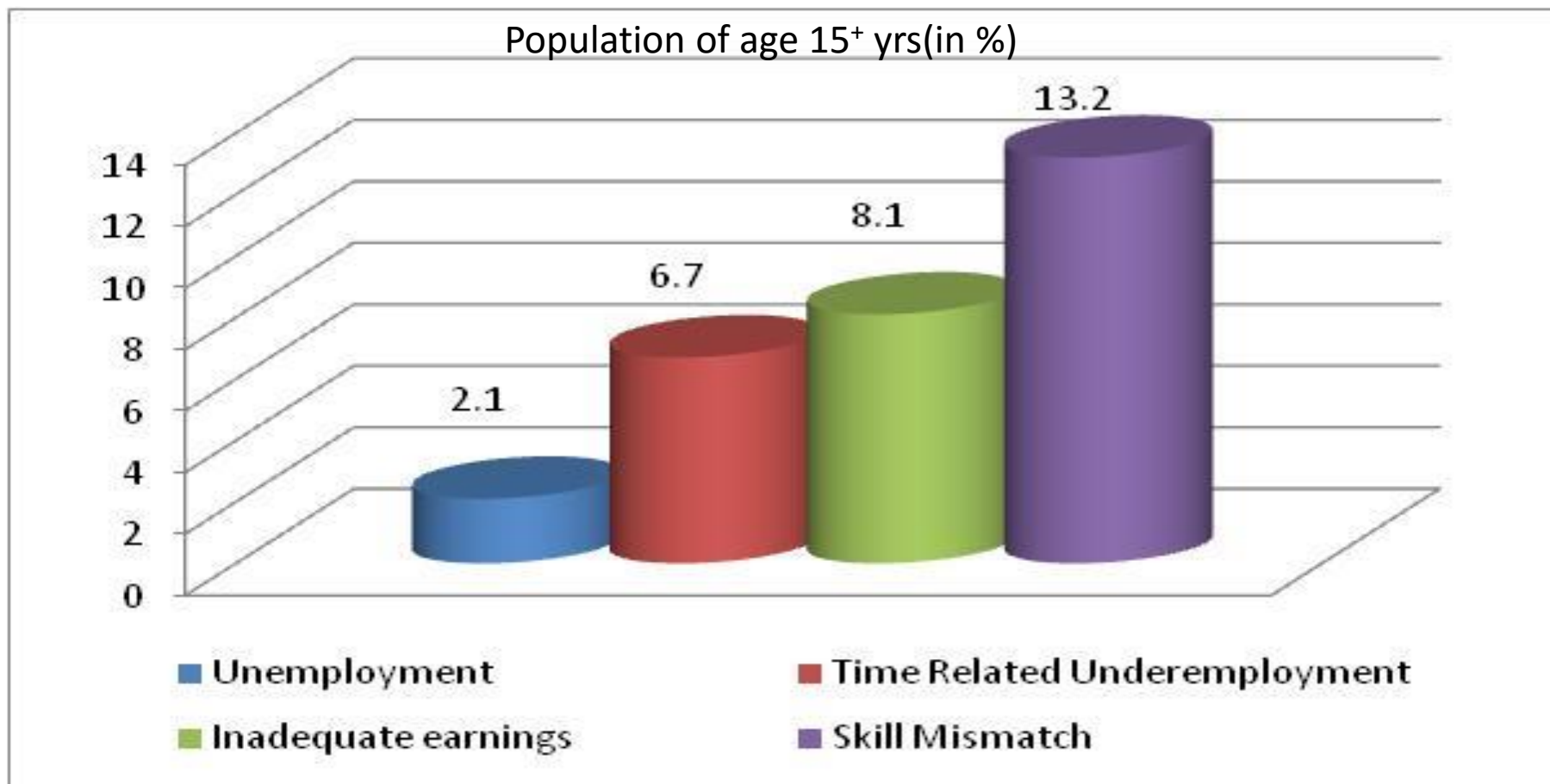
Labour Force Participation Rate-2008



Source: Nepal Labour Force Survey, 2008, CBS



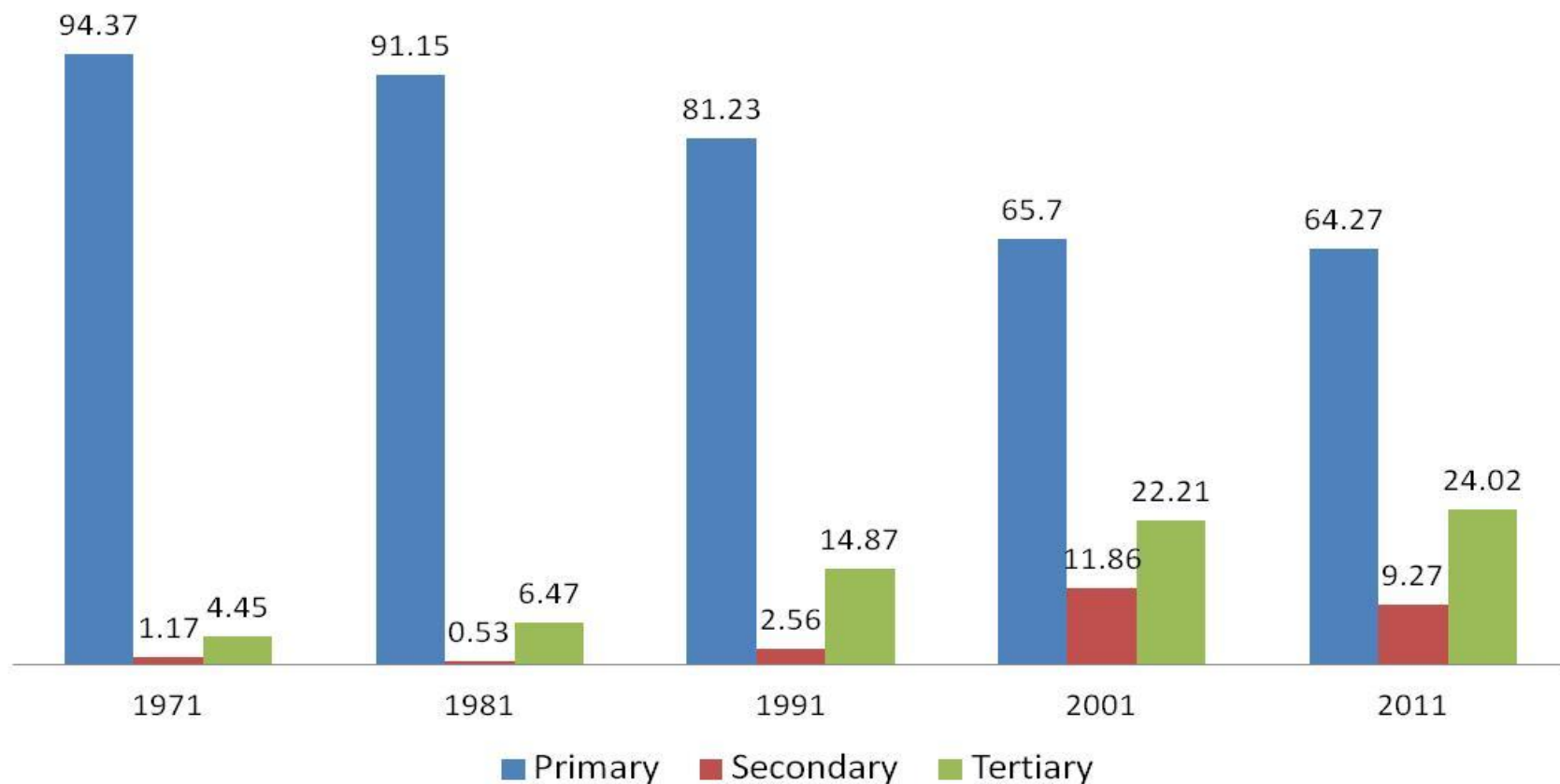
Labor Underutilization -2008



Source: Nepal Labour Force Survey, 2008, CBS



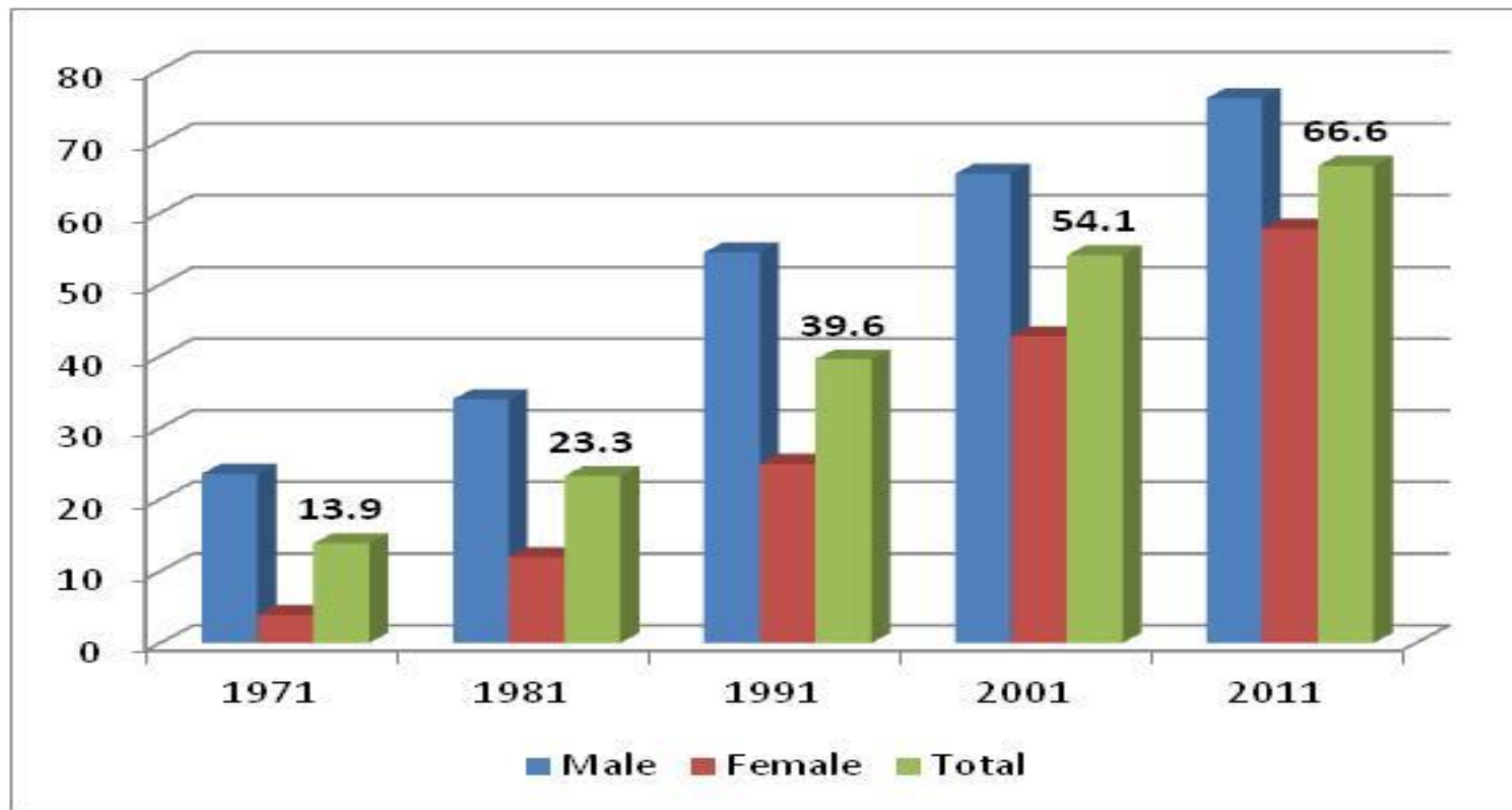
Employed Population by Sector



Source: Nepal Labour Force Survey, 2008, CBS



Literacy Rate of 6+ Years Population (%)



Source: Population Censuses of Nepal



Possible Data Sources to Produce NTA in Nepal

Population Census (every 10 Years)

Nepal Living Standards Survey (NLSS) :1996, 2003 , 2011

Nepal labour Force Survey : 1998 , 2008

Annual Household Survey (AHS) : Every year

National Accounts Statistics : Every Year

Household budget Survey (NRB) : Every 5 years

Demographic Health Survey (DHS) : Every 5 Years



Potential Agencies for NTA

Central Bureau of Statistics (CBS)

National Planning Commission Secretariat (NPCS)

Ministry of Health and Population (MoHP)

Ministry of Finance (MoF)

Central Department of Population Studies(CDPS)- (TU)

Centre for Economic Development and Administration (CEDA)

Ministry of women ,children and social welfare

Ministry of federal affairs and local development (MoFALD)

Nepal Rastra Bank (NRB)- Central Bank of Nepal

Development Partners



Issues and Challenges to Produce NTA in Nepal

Training and development of human resource

Management of financial resource

Technical assistance for research and analysis of NTA

Advocacy among the policy makers

Existing data sources may be inadequate

Quality of data (ex. age heaping in population census data)

Migrated population and data gap on migration



Thank You

A decorative graphic featuring the words "Thank You" in a pink, cursive font. The text is framed by a green vine that starts on the left, loops around the text, and ends on the right with a pink flower and a green leaf. A thin red horizontal line is positioned below the graphic.