

Demographic Transition and Life Cycle Deficit in Bangladesh A Cross Gender Comparison

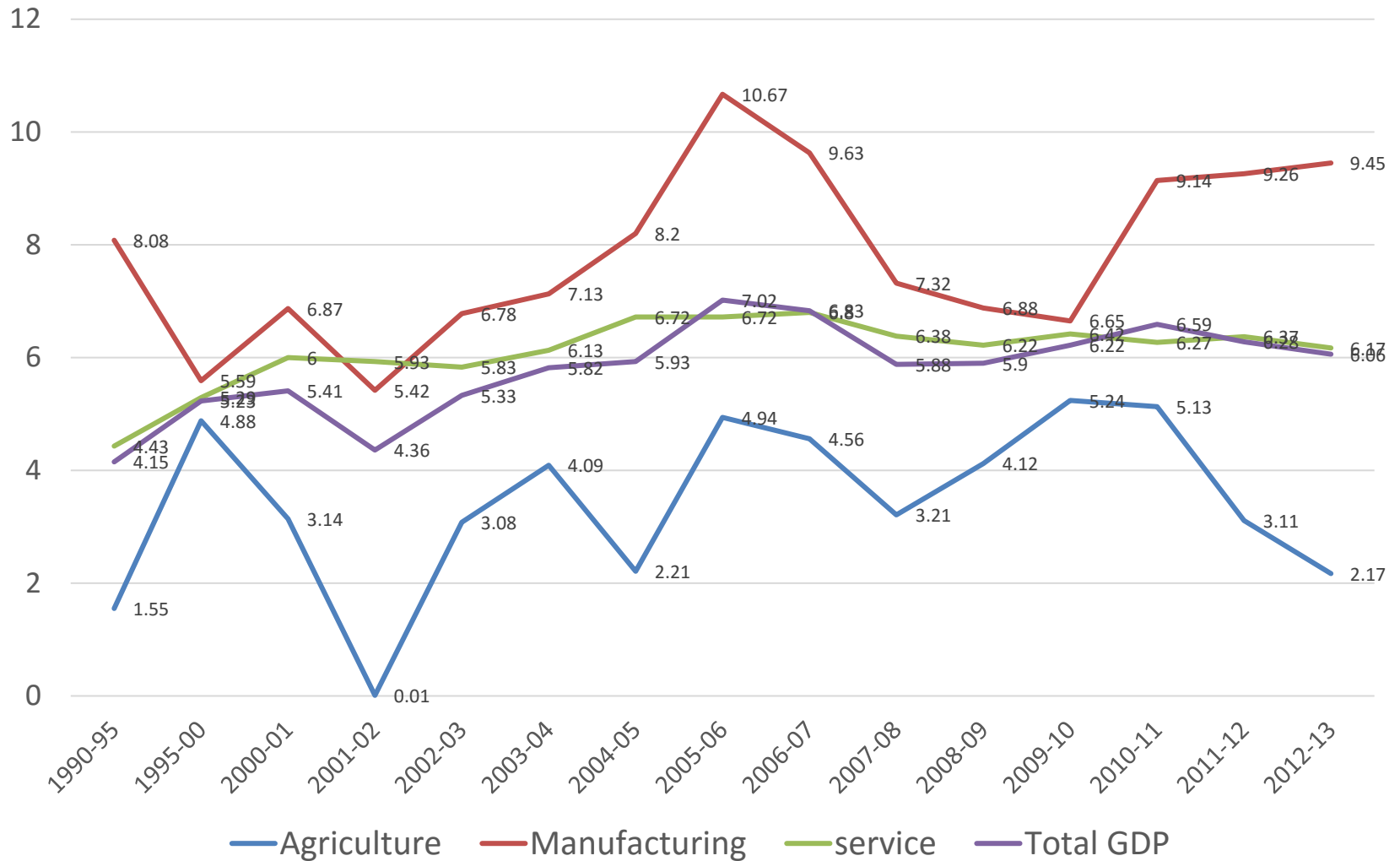
Muhammad Moshiur Rahman

Syer Tazim Haque

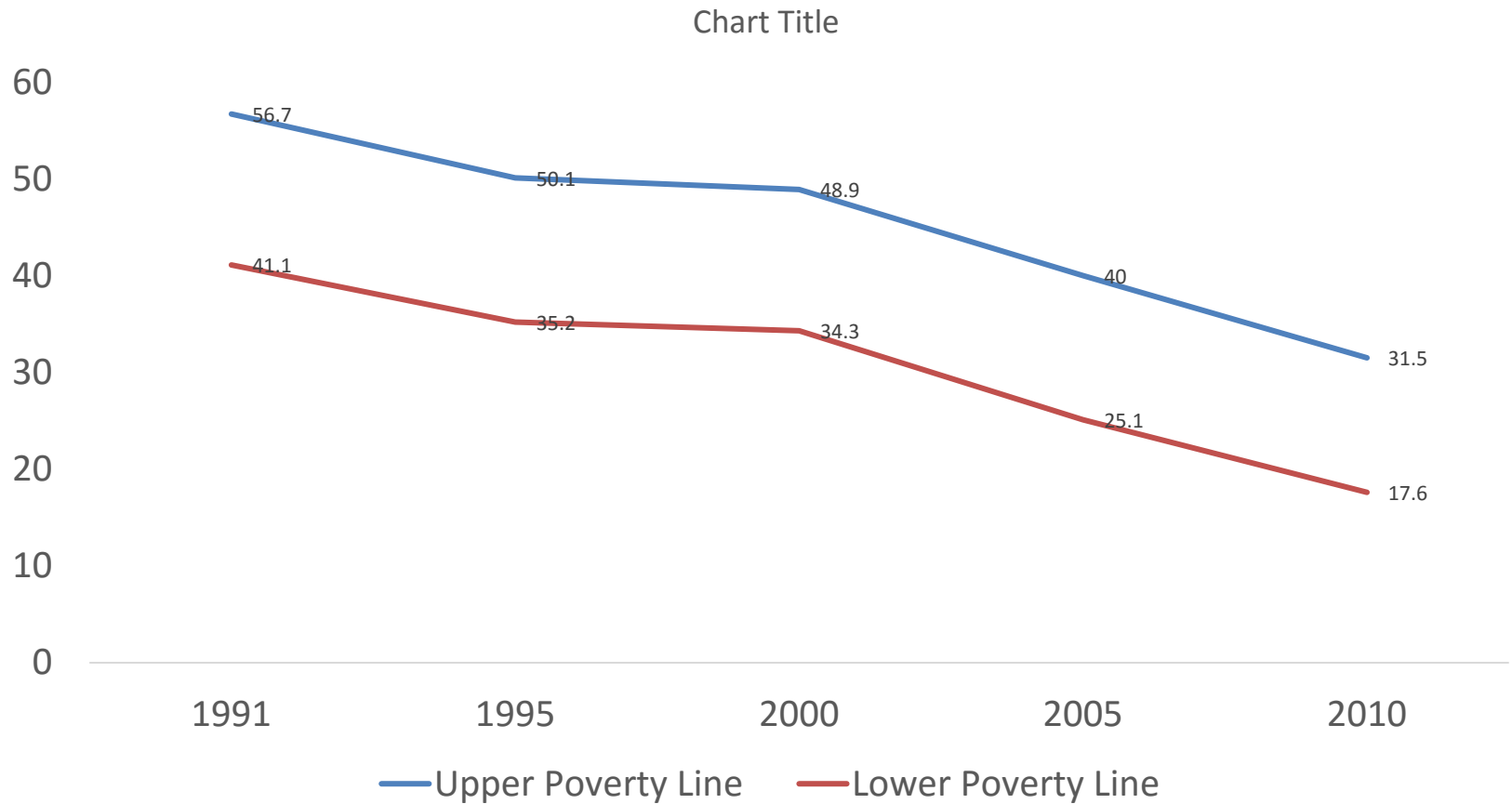
Overview

- Total population from the preliminary result of the 2011 census was 149.77 million.
- The total population of Bangladesh increased by 25.42 million in 2011 from 2001.
- By 2030 the projected total population will be 185.06 million due to –
- An increase in life expectancy at birth for male and female from 67.8 and 69.1 years, respectively, in 2005-2010 to 74.4 and 76.6 in 2025-2030, and
- Decline in the total fertility rate (TFR) from 2.40 to 1.83

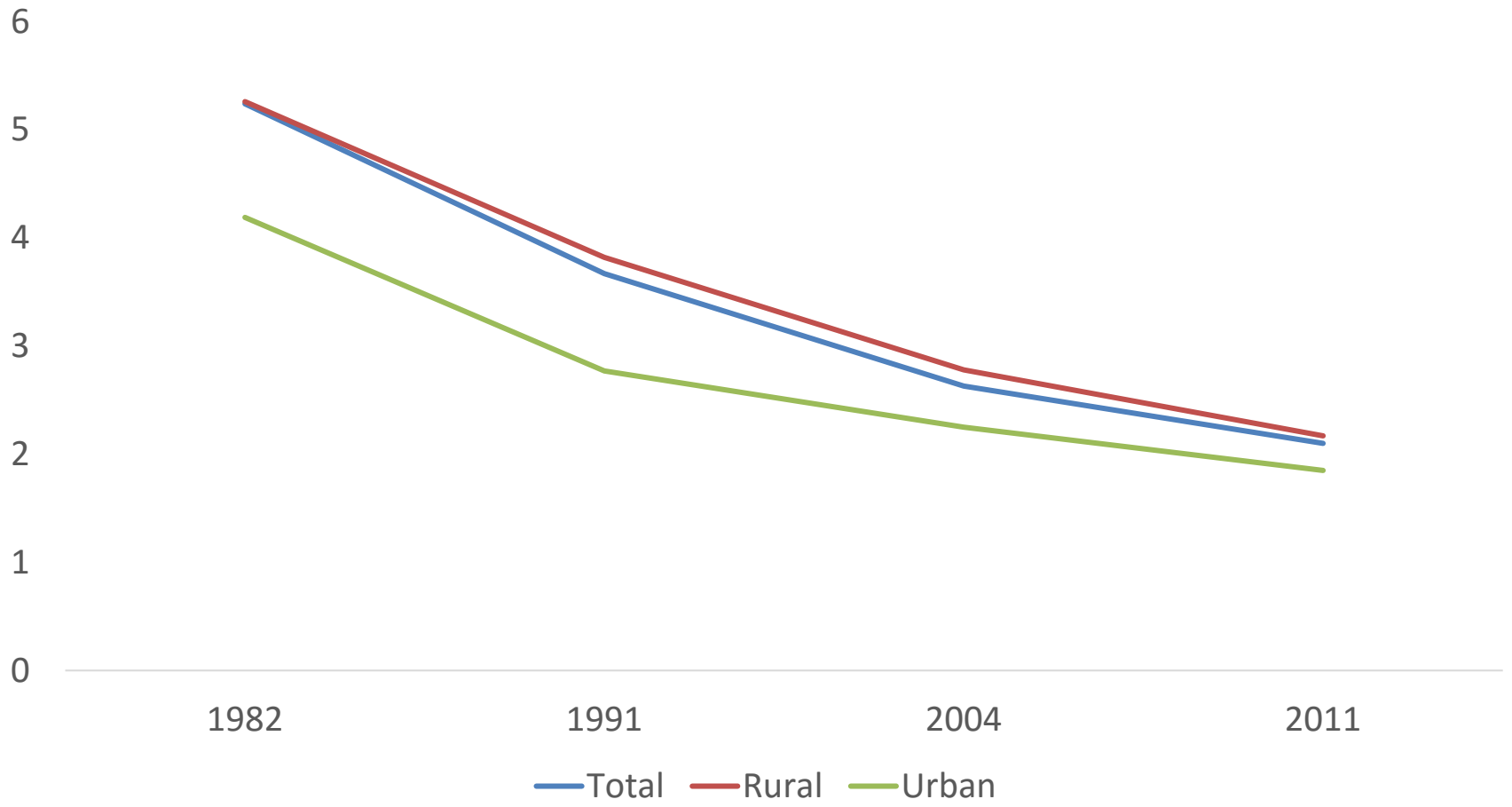
Sector Growth Performance - Bangladesh



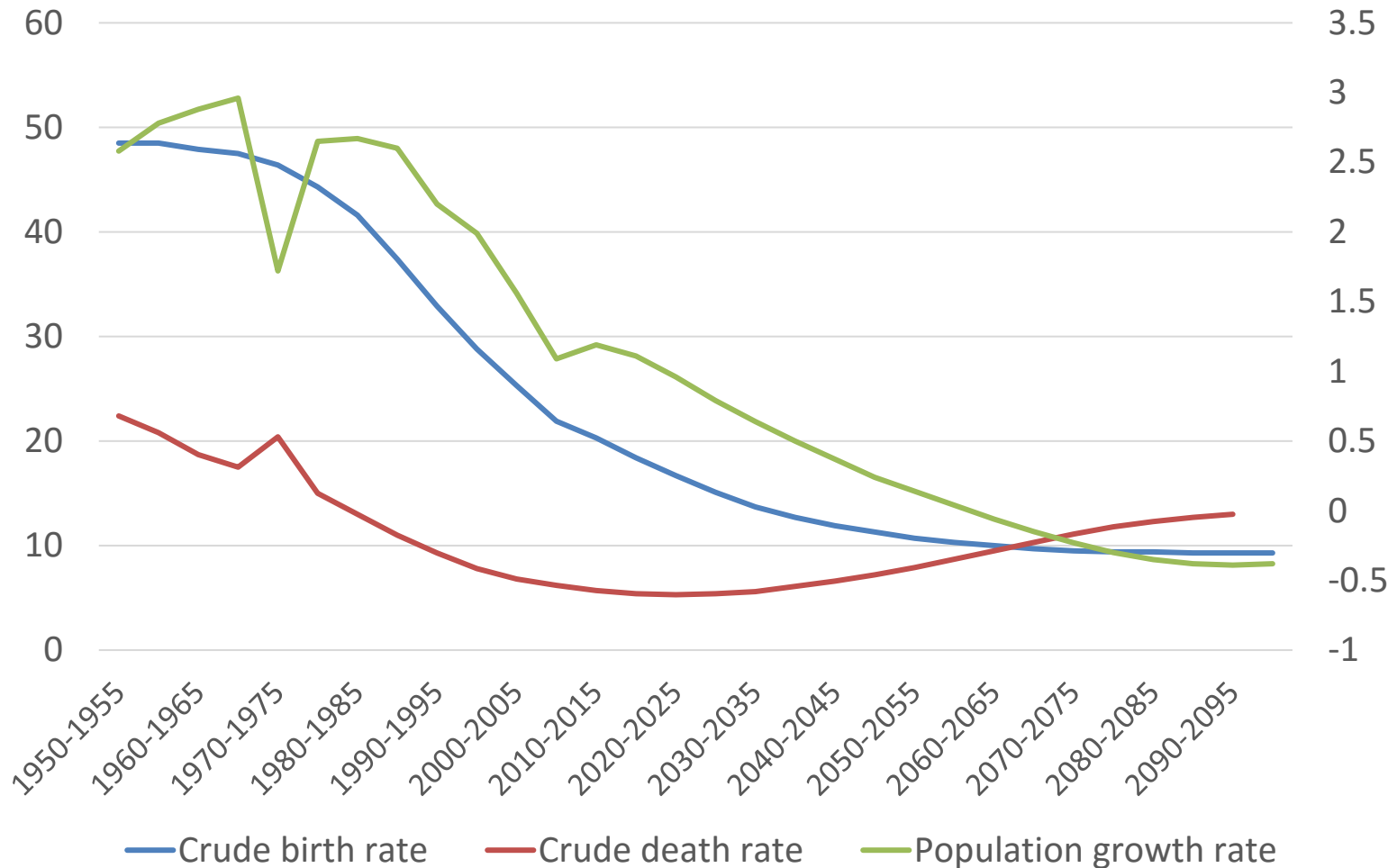
Head Count Rates of Incidence of Poverty (CBN Method), 1991-92 to 2010



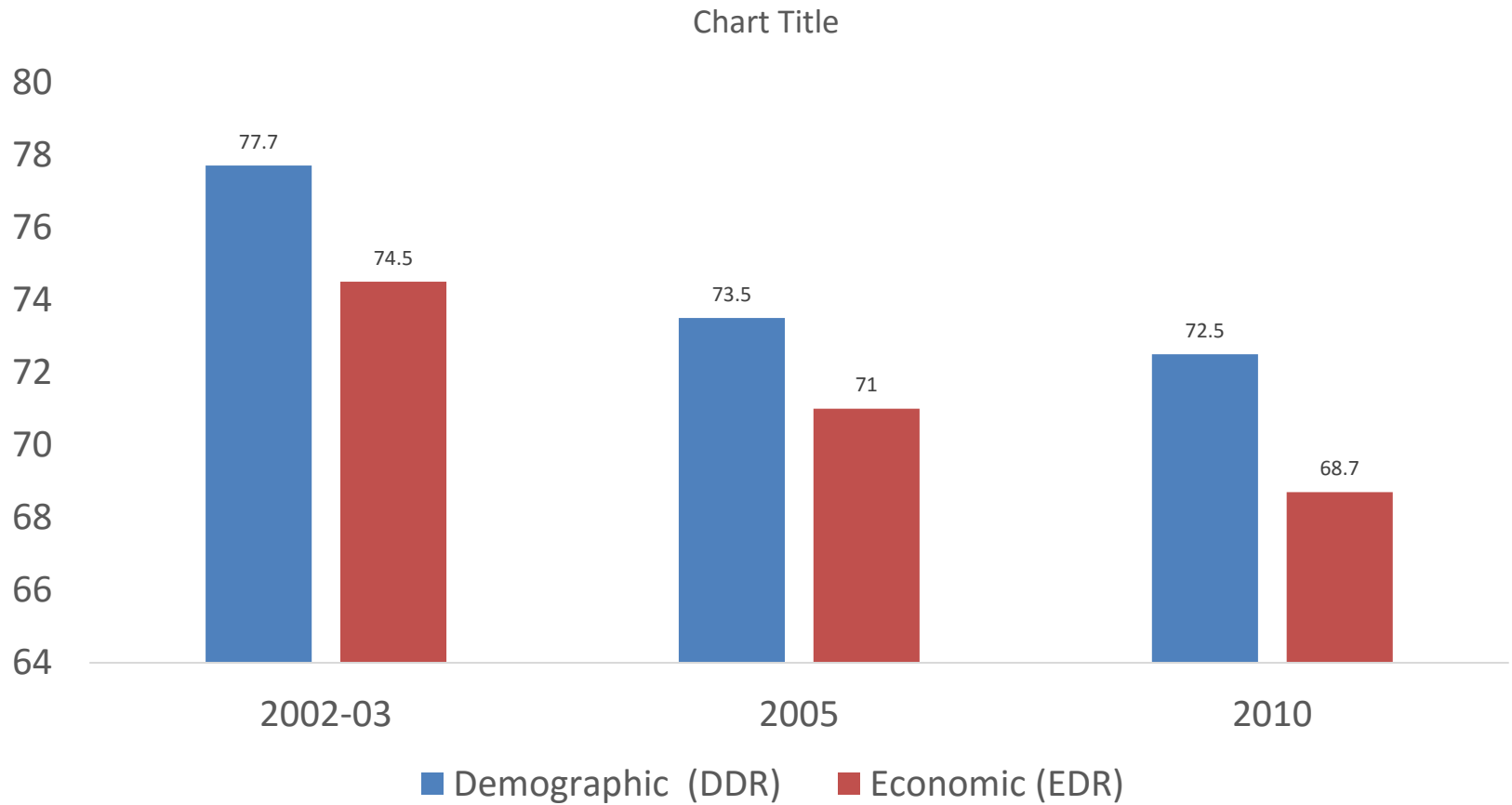
Total Fertility Rate



Demographic Transition

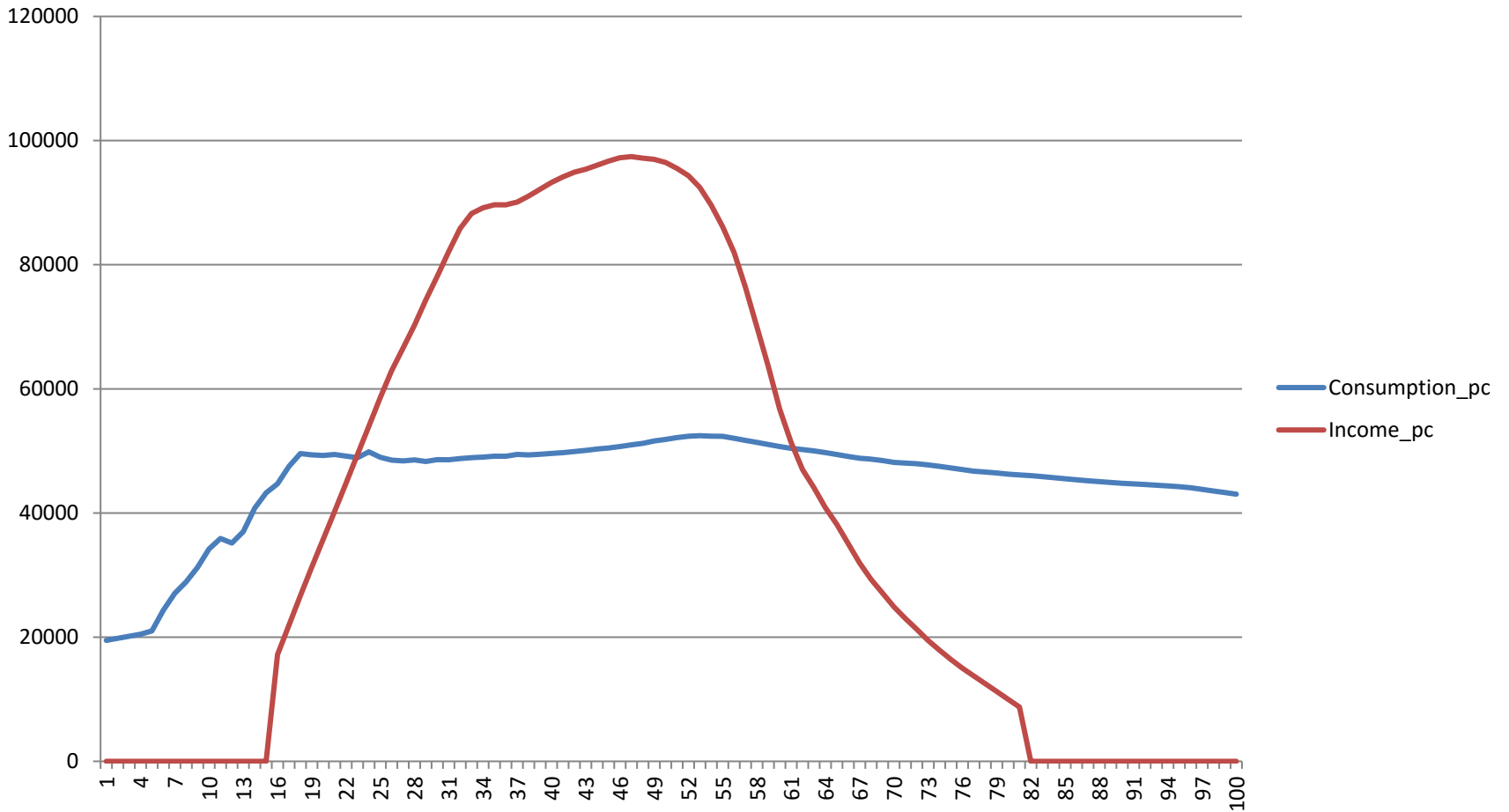


Dependency Ratio



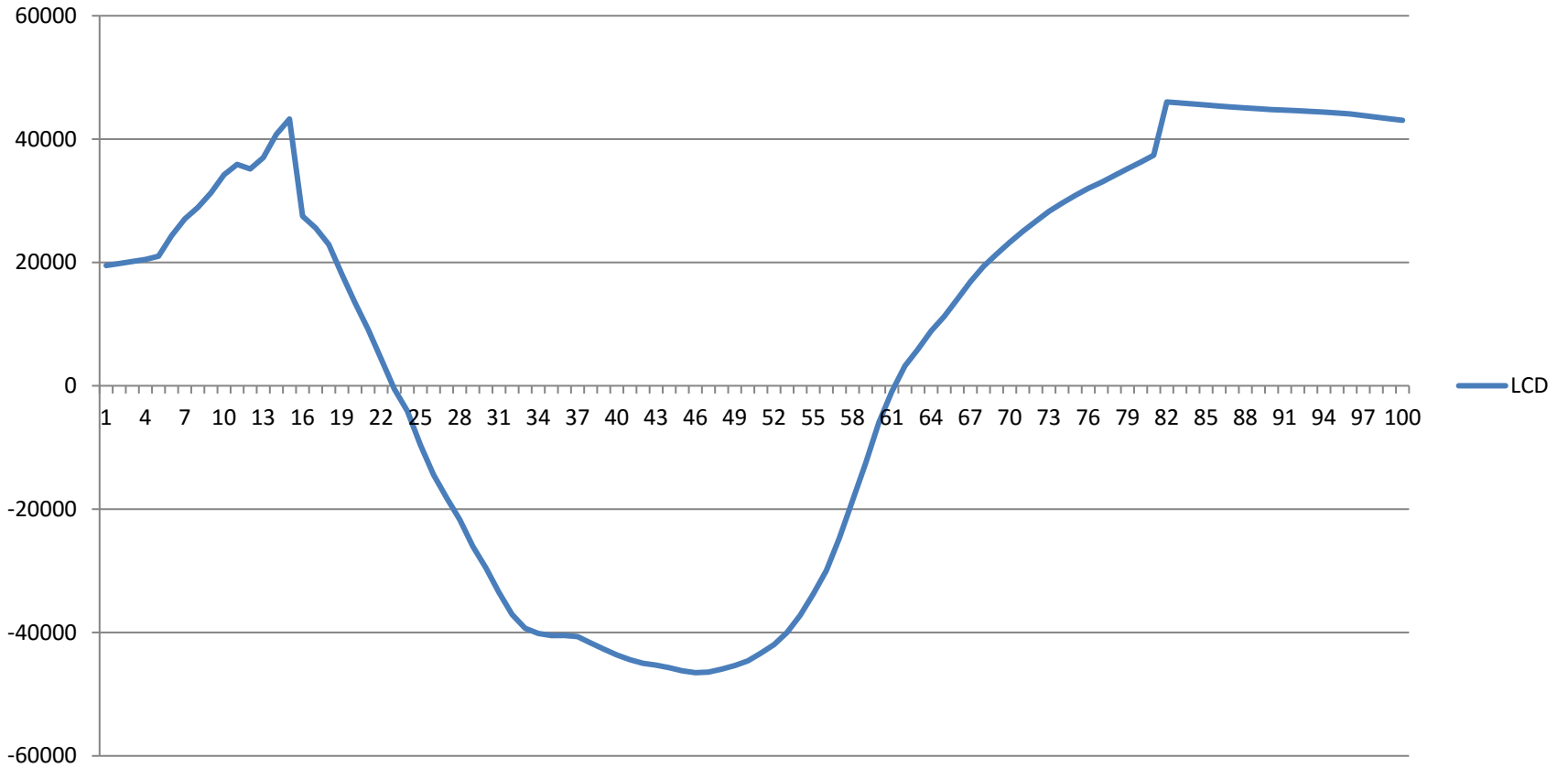
Life Cycle Deficit Gender Perspective

Most Important Graph - Bangladesh

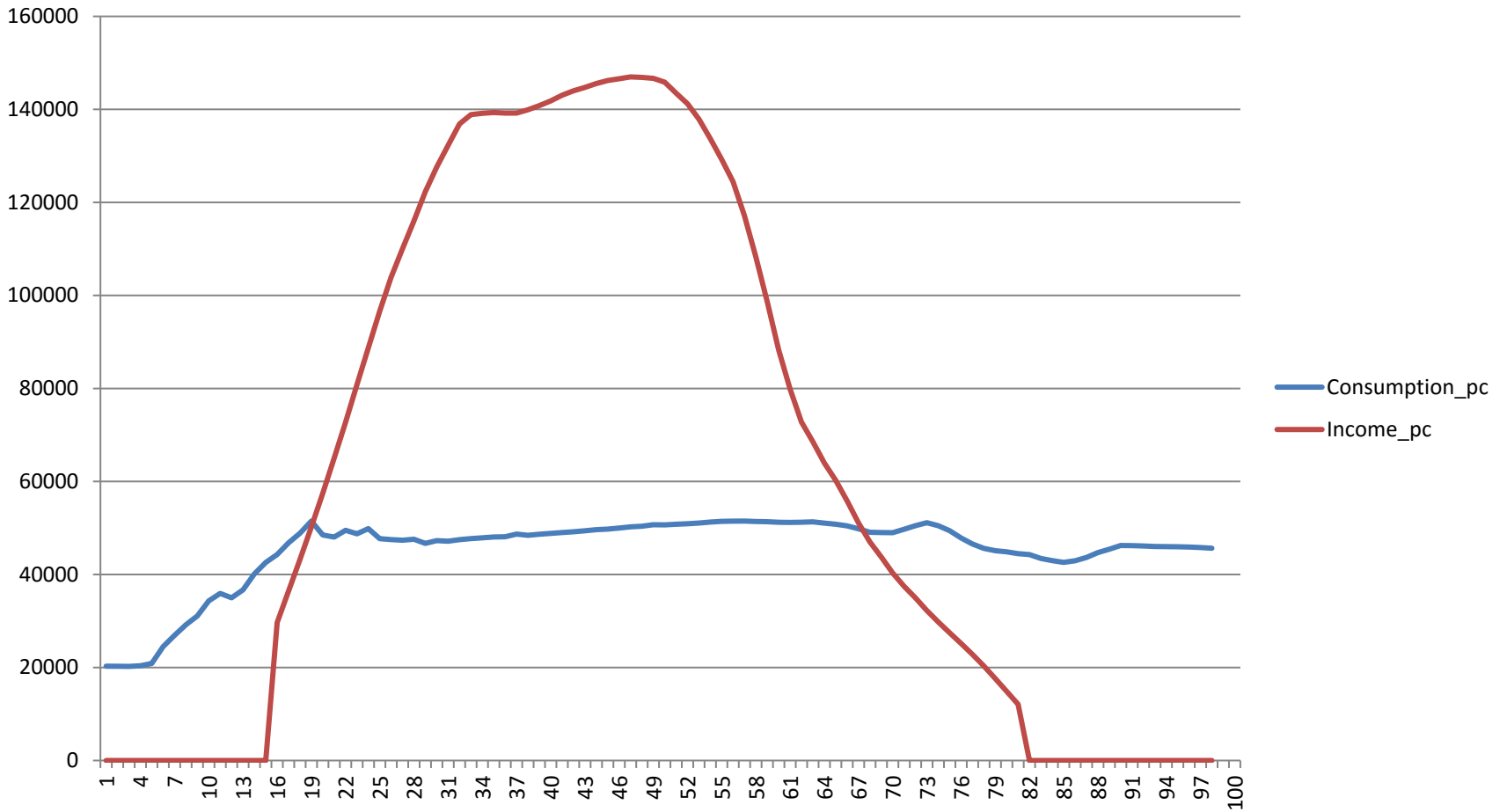


Life Cycle Deficit

LCD

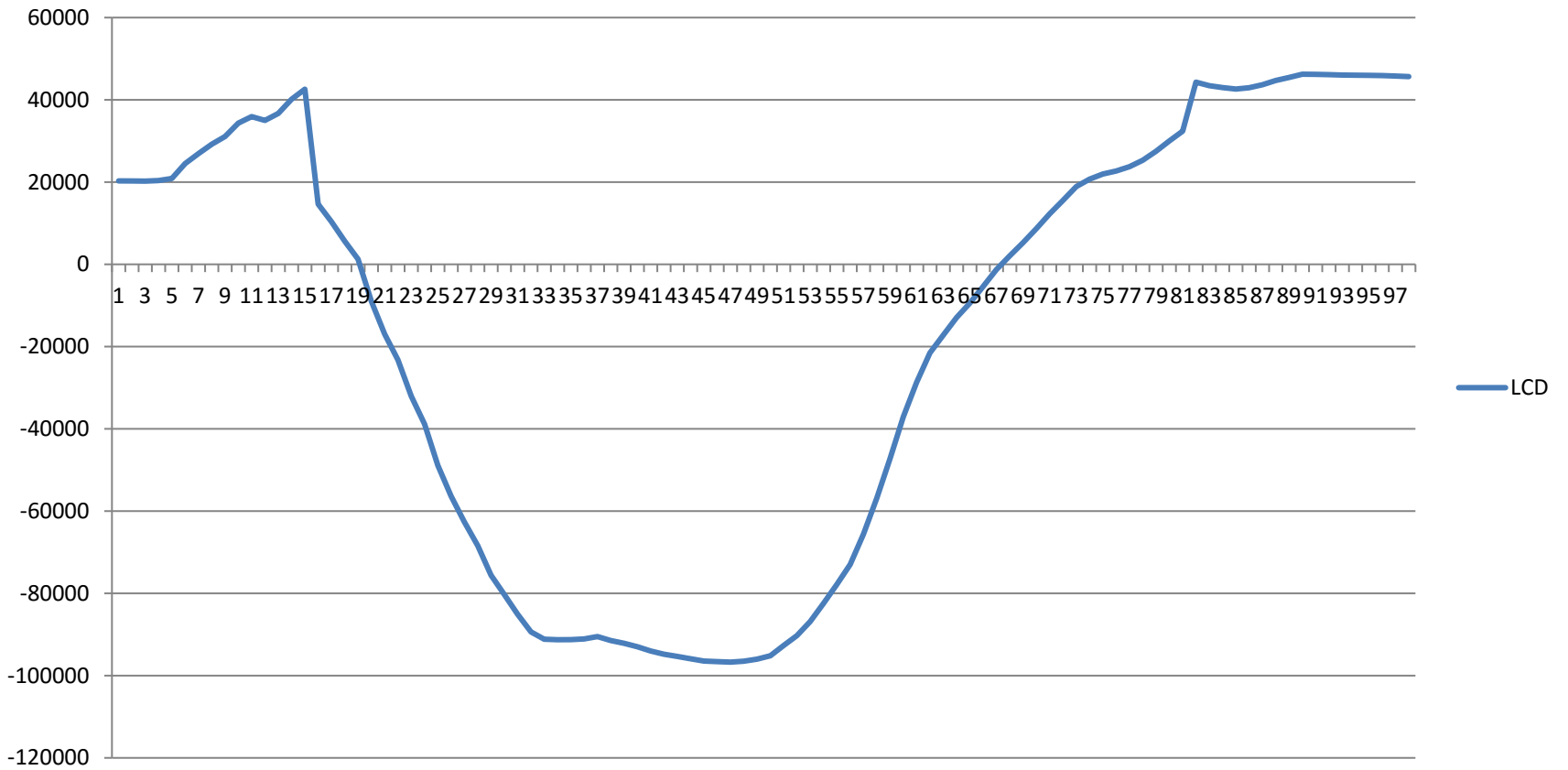


Most Important Graph - Male

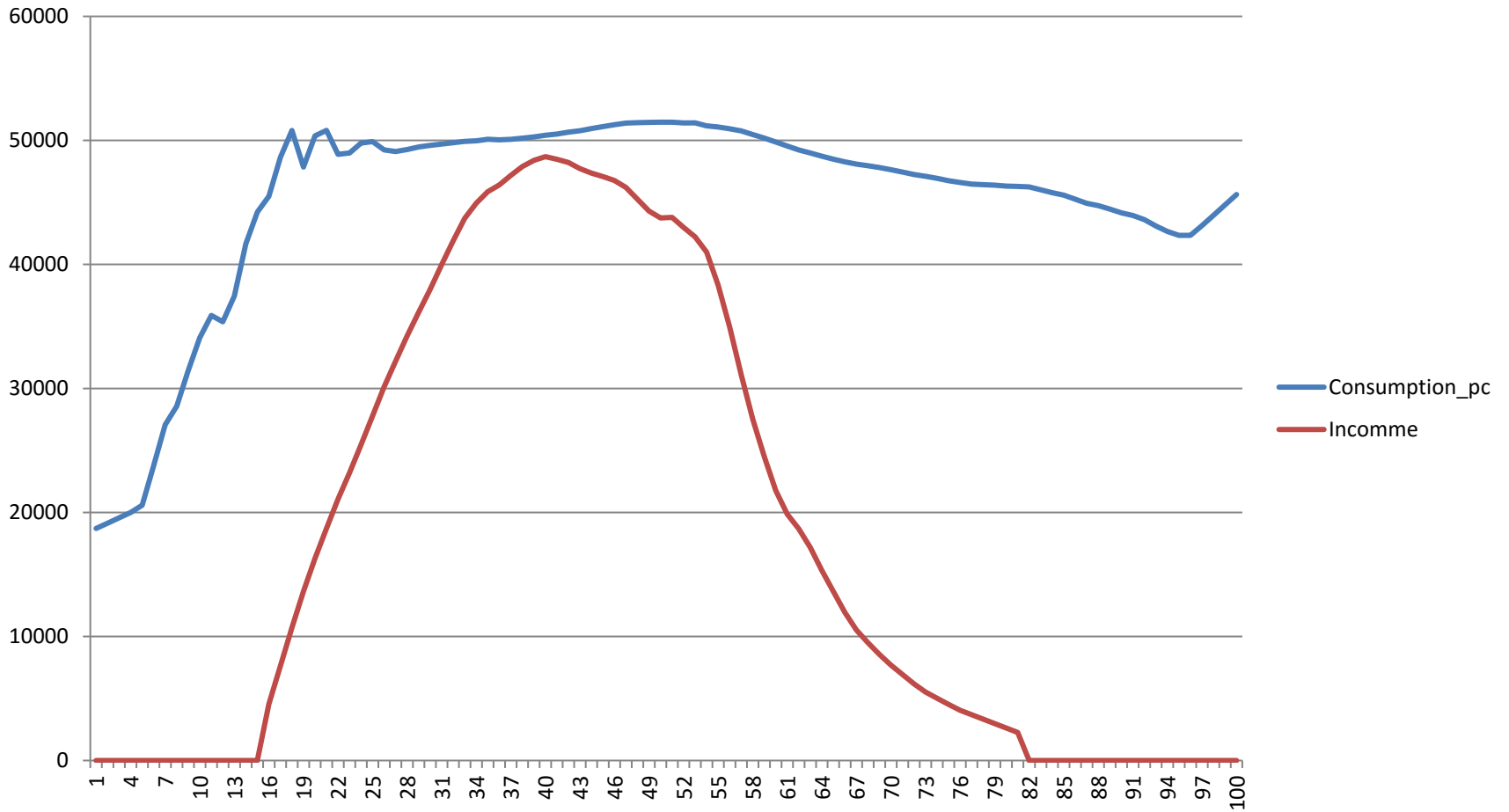


Life Cycle Deficit - Male

LCD

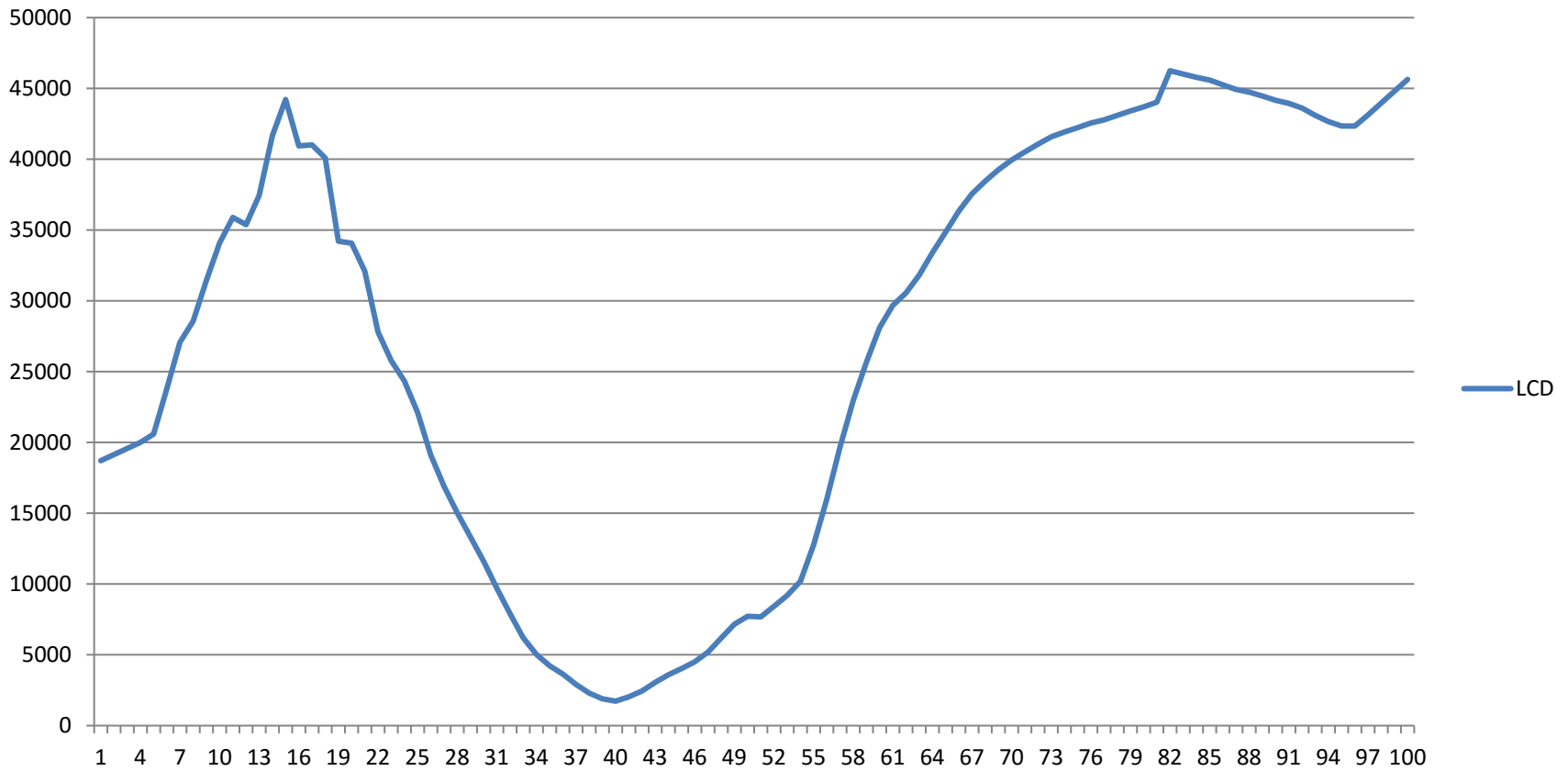


Most Important Graph - Female

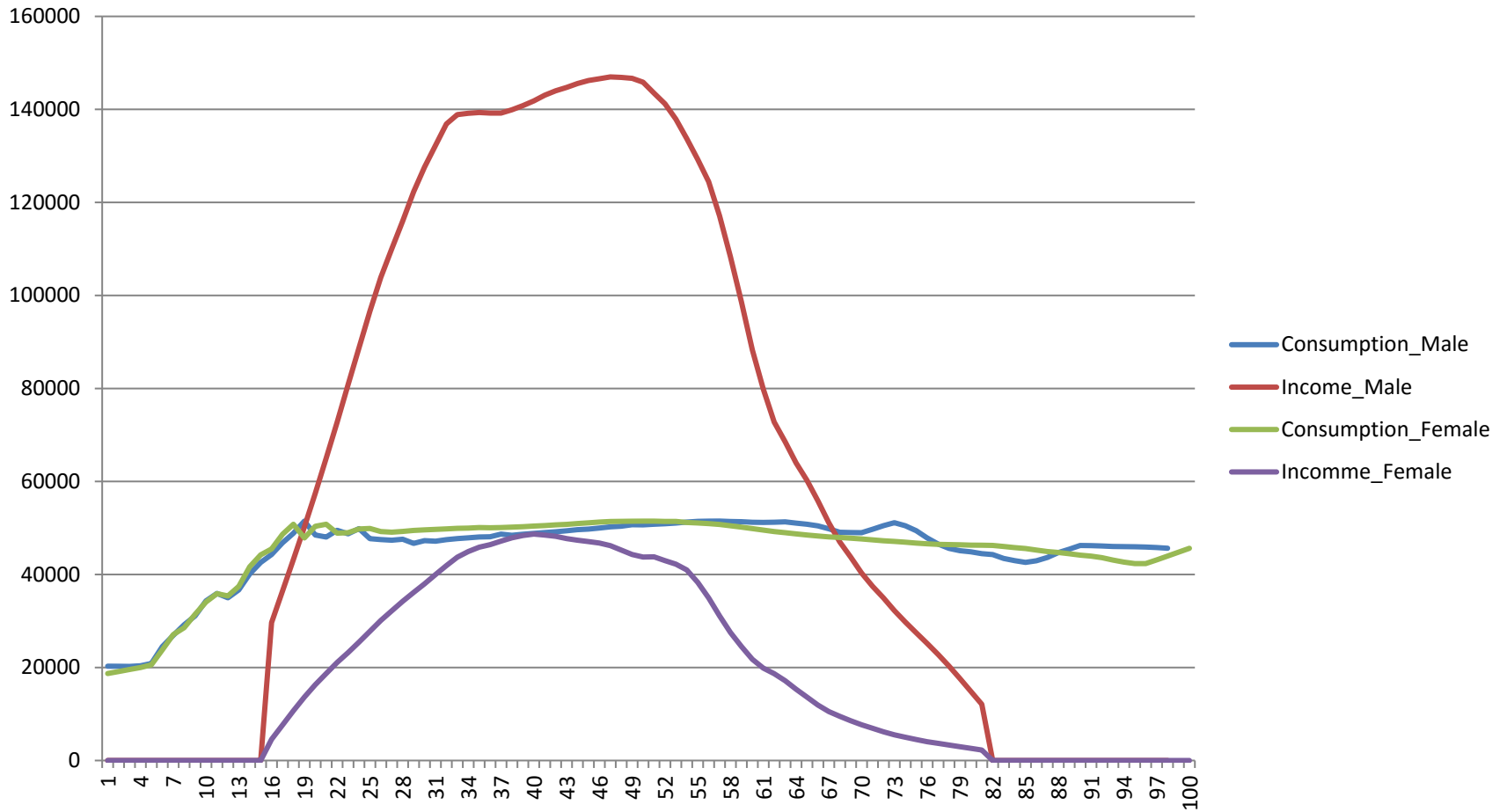


Life Cycle Deficit - Female

LCD



Most Important Graph – Male and Female

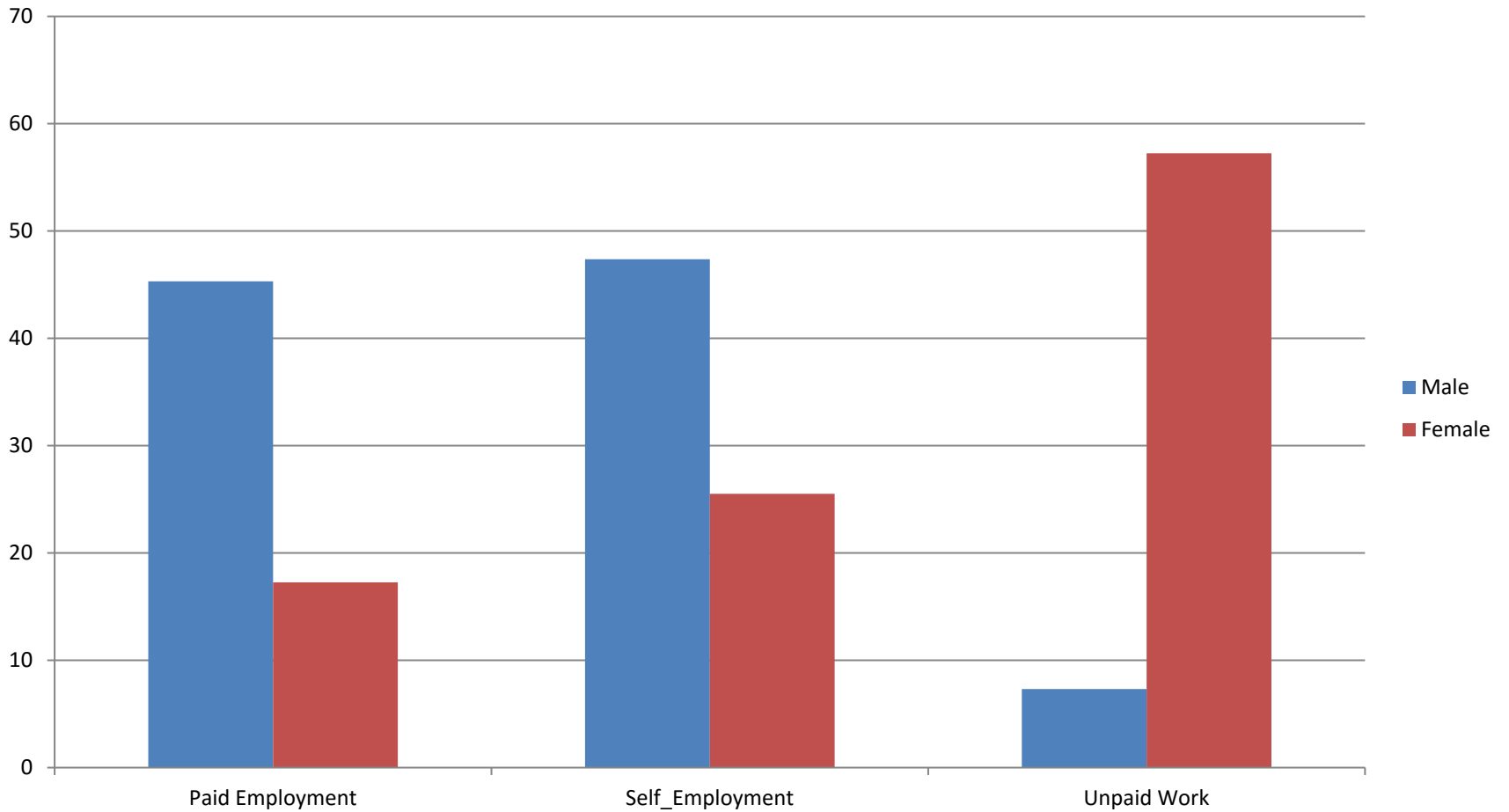


Issues

Three Major Issue

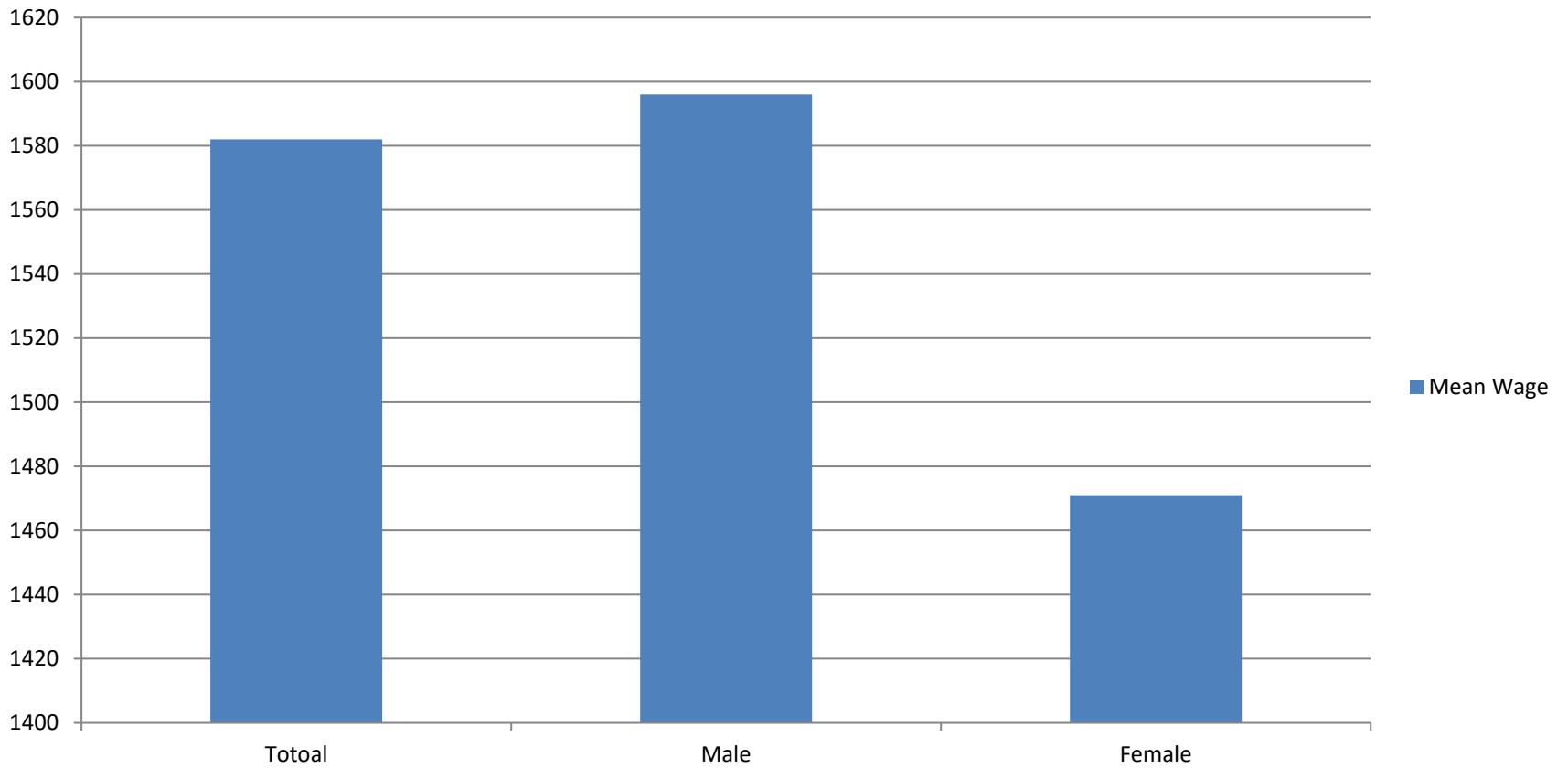
- Female Employment
- Female Payment
- Female Education Enrollment

Employment Sector – Male and Female

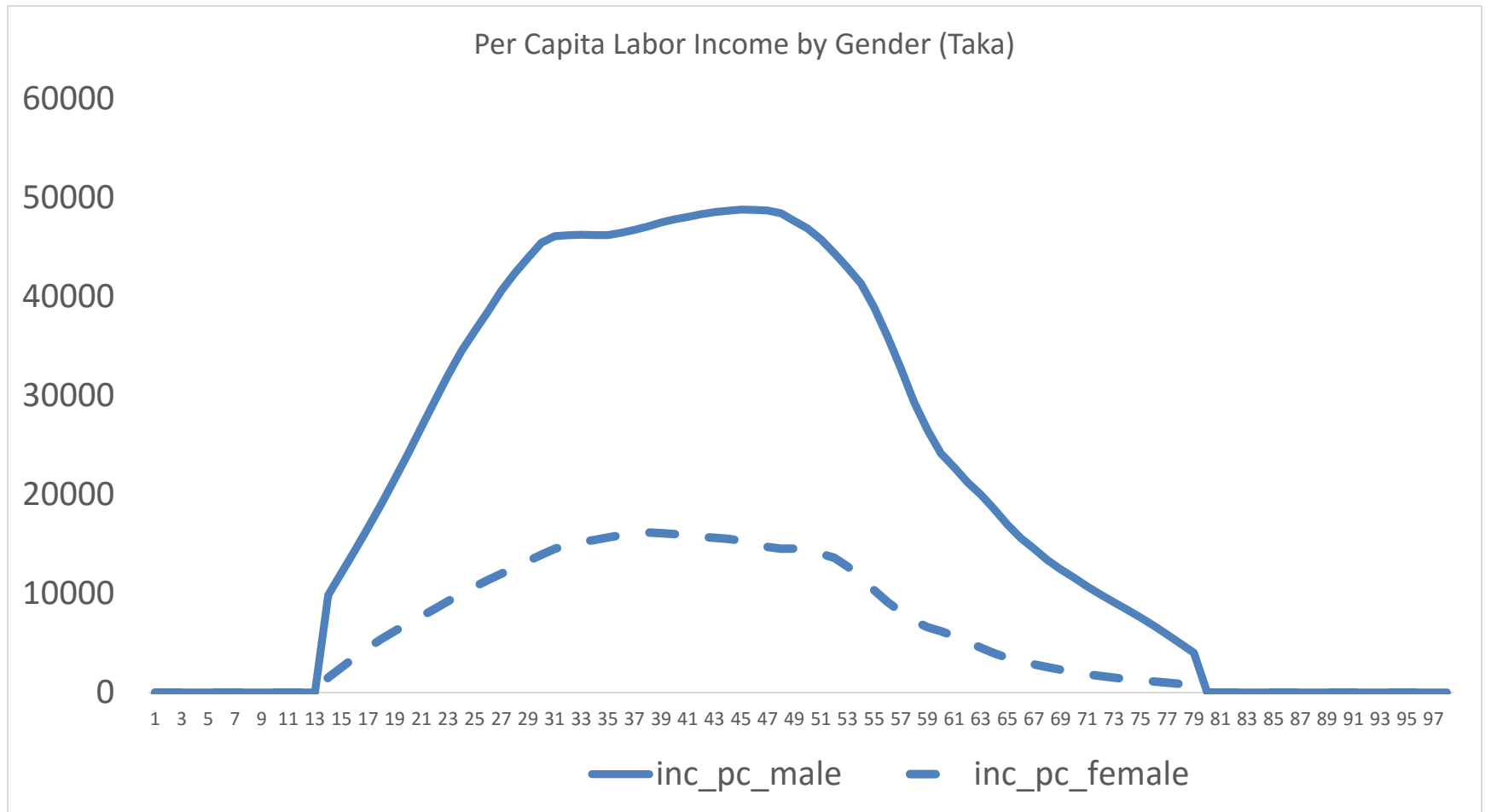


Mean Wage

Mean Wage



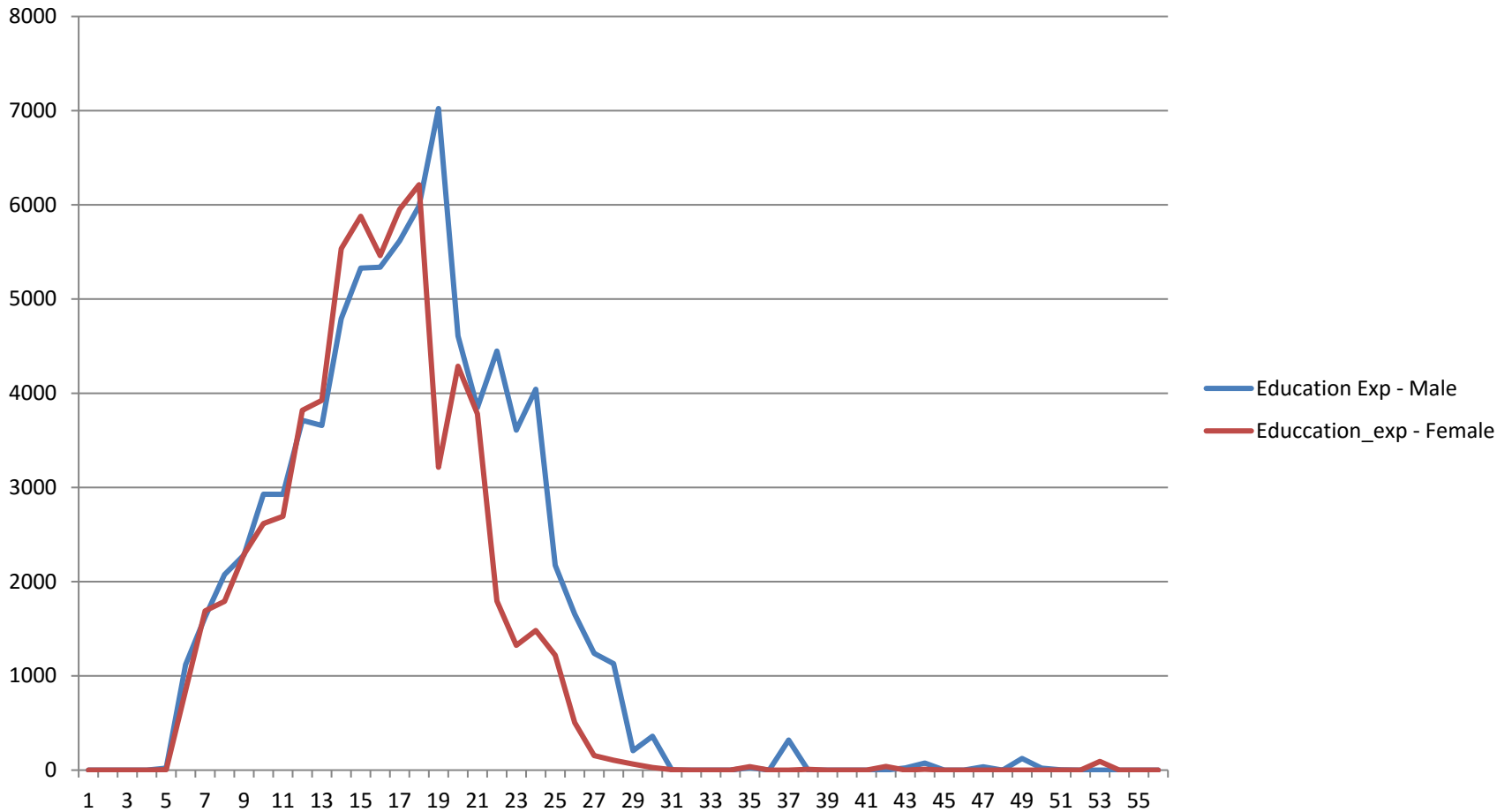
Employment Income – Male and Female



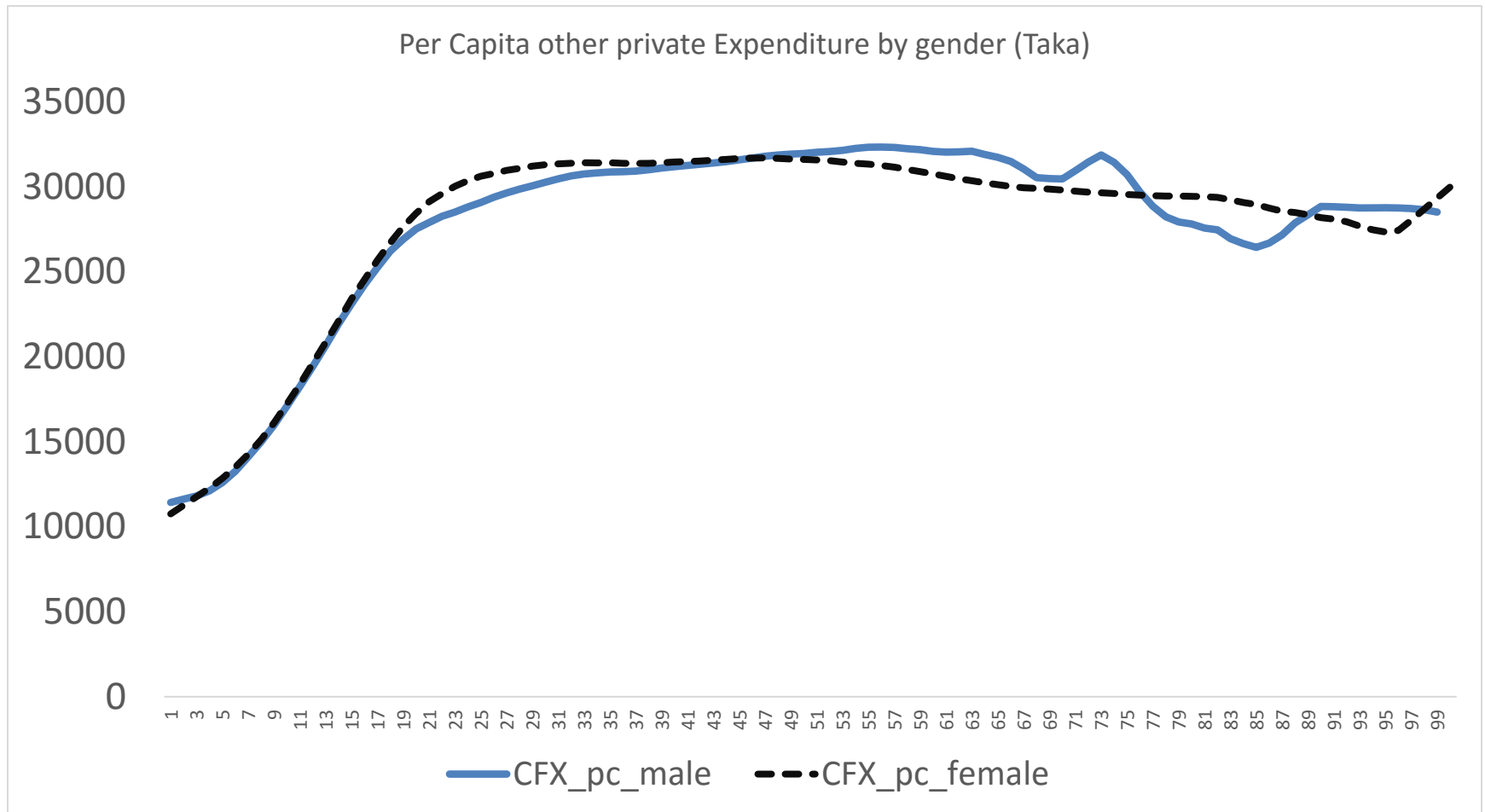
Female Enrollment in Public Education

Enrollment Level	Number of Females
Primary	5061165
Secondary	106519
College	358523
University	81988

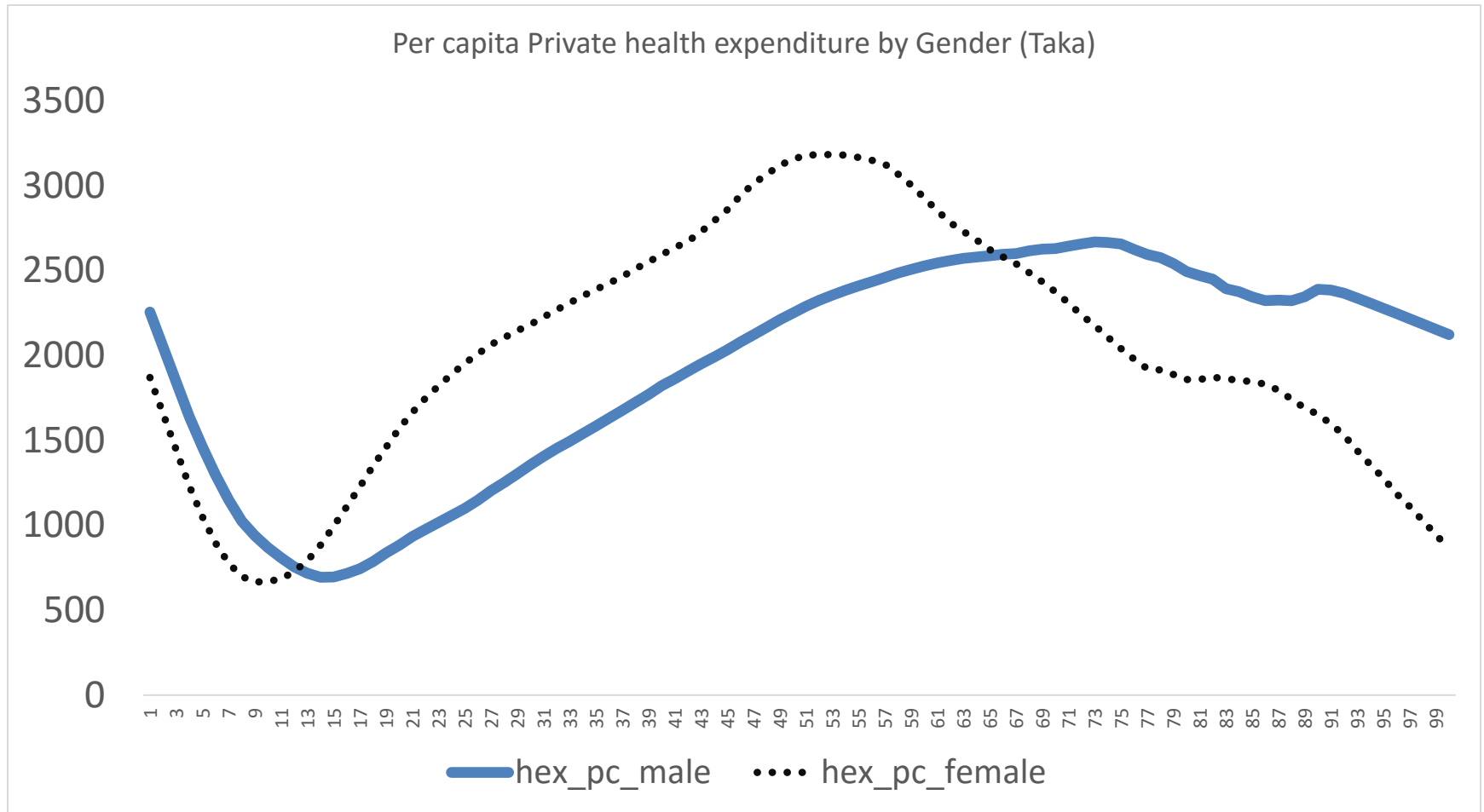
Education Expenditure – Male and Female



Per Capita Other Consumption



Per Capita Health Expenditure



Findings from Gender Based LCD

- Female has a high life cycle deficit
- Female paid employment participation needs to be increased
- Female education enrollment at tertiary level is low

Thank You